



E.G.S. PILLAY ENGINEERING COLLEGE (AUTONOMOUS)

NAGAPATTINAM – 611 002. TAMILNADU, INDIA

Approved by AICTE, New Delhi, Affiliated to Anna University, Chennai
(Accredited by NAAC with 'A' Grade and NBA)

Email: principal@egspec.org website: www.egspec.org Ph: 04365-251112

1.4.2 Feedback collected, analysed and action taken.

Also available in our website: <http://www.egspec.org/feedback.php>

Semester wise / year wise is obtained from,

1) Students, 2) Teachers, 3) Employers, 4) Alumni

Analysed Feedback Forms

- 1) Students
- 2) Teachers
- 3) Employers
- 4) Alumni

ATTESTED

Dr. S. RAMABALAN, M.E., Ph.D.,
PRINCIPAL
E.G.S. Pillay Engineering College,
Thethi, Nagore - 611 002.
Nagapattinam (Dt) Tamil Nadu.



E.G.S. PILLAY ENGINEERING COLLEGE (AUTONOMOUS)

Department of Management Studies

NAGAPATTINAM – 611 002. TAMILNADU, INDIA

Approved by AICTE, New Delhi, Affiliated to Anna University, Chennai

(Accredited by NAAC with 'A' Grade and NBA)

Email: principal@egspec.org website: www.egspec.org Ph: 04365-251112

Curriculum Design and Development Feedback Form – Students (2017-18)									
S.No.	Parameters	5	4	3	2	1	Total weightage (400)	Percentage	3 scale weightage
1.	Rate how was the courses syllabus offered by the programme giving opportunities to update the basic knowledge	57	23	0	0	0	377	94	2.8
2.	Rate the appropriateness of the sequence of the courses provided by the curriculum	51	29	0	0	0	371	93	2.8
3.	Rate the depth of the syllabus of the courses about the competencies expected by the industry/current global scenario	56	21	1	2	0	371	93	2.8
4.	Rate the sequence of the units in the courses	44	33	3	0	0	361	90	2.7
5.	Rate the adequateness of the textbooks and reference books mentioned for the courses	55	24	1	0	0	374	94	2.8
6.	Rate the syllabus content of the courses in terms of giving opportunities to students towards participating in competitions, internships, field visits, etc.	55	24	1	0	0	374	94	2.8
7.	Rate the design of the courses in terms of extra learning or self-learning	50	24	6	0	0	364	91	2.7
8.	Rate the flexibility in choosing the electives concerning technology advancement	30	45	5	0	0	345	86	2.6
9.	Rate the percentage of the courses offering Laboratory components (including practical's, summer training, business communication skills, ethics, Social responsibility, life skills)	45	29	6	0	0	359	90	2.7
10.	Rate the composition of the courses in terms of social responsibility, ethics, discipline core, discipline electives, self study electives, one credit, projects, etc.	46	23	11	0	0	355	89	2.7
							365	91	2.7

ATTESTED

(Signature)
Dr. S. RAMABALAN, M.E., Ph.D.,
PRINCIPAL

E.G.S. Pillay Engineering College,
 Thethi, Nagore - 611 002
 Nagapattinam (Dt) Tamil Nadu



E.G.S. PILLAY ENGINEERING COLLEGE (AUTONOMOUS)

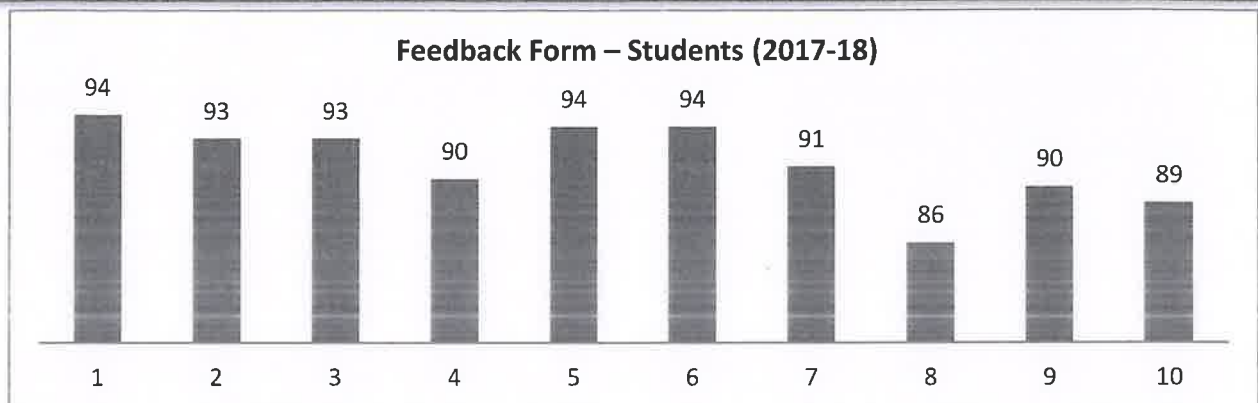
Department of Management Studies

NAGAPATTINAM – 611 002. TAMILNADU, INDIA

Approved by AICTE, New Delhi, Affiliated to Anna University, Chennai

(Accredited by NAAC with 'A' Grade and NBA)

Email: principal@egspec.org website: www.egspec.org Ph: 04365-251112



Interpretation: (2017-18)

- Around 94% of the students opinions that the courses syllabus offered by the programme giving opportunities to update the basic knowledge.
- Around 93% of the students opinions that the sequence of the courses provided by the curriculum is appropriate.
- Around 93% of the students opinions that the depth of the syllabus of the courses about the competencies expected by the industry/current global scenario is very good.
- Around 90 % of the students opinions that the sequence of the units in the courses is good.
- Around 90 % of the students opinions that the textbooks and reference books mentioned for the courses are adequate.
- Around 94% of the students opinions that the syllabus content of the courses in terms of giving opportunities to students towards participating in competitions, internships, field visits are good.
- Around 91% of the students opinions that the design of the courses in terms of extra learning or self-learning is good.
- Around 86% of the students opinions that the flexibility in choosing the electives concerning technology advancement is good.
- Around 90% of the students opinions that the courses offering Laboratory components are good.
- Around 89% of the students opinions that the composition of the courses in terms of social responsibility, ethics, discipline core, discipline electives, self-study electives, one credit, projects, etc are good.

Remarks Received: Tutorial hours can be made effectively utilized especially for subjects, Accounts for Managers and Statistics for Managers. Industrial trips and visits may be arranged based on subject specific in regulated manner.

ATTESTED

Dr. S. RAMABALAN, M.E., Ph.D.,
PRINCIPAL
E.G.S. Pillay Engineering College,
Thethi, Nagore - 611 002.
Nagapattinam (Dt) Tamil Nadu.



E.G.S. PILLAY ENGINEERING COLLEGE (AUTONOMOUS)

Department of Management Studies

NAGAPATTINAM – 611 002. TAMILNADU, INDIA

Approved by AICTE, New Delhi, Affiliated to Anna University, Chennai

(Accredited by NAAC with 'A' Grade and NBA)

Email: principal@egspec.org website: www.egspec.org Ph: 04365-251112

Action Taken Summary: Based on the received remarks from students, it was decided that in all the tutorial hours more models have been put into practice in subjects mentioned to improve the learning skills.

To improve real world knowledge on subjects taught, field trips and industrial visits were planned.

ATTESTED

**Dr. S. RAMABALAN, M.E., Ph.D.,
PRINCIPAL**

**E.G.S. Pillay Engineering College,
Thethi, Nagore - 611 002.
Nagapattinam (Dt) Tamil Nadu.**



E.G.S. PILLAY ENGINEERING COLLEGE (AUTONOMOUS)

Department of Management Studies

NAGAPATTINAM – 611 002. TAMILNADU, INDIA

Approved by AICTE, New Delhi, Affiliated to Anna University, Chennai

(Accredited by NAAC with 'A' Grade and NBA)

Email: principal@egspec.org website: www.egspec.org Ph: 04365-251112

Curriculum Design and Development Feedback Form – Students (2018-19)									
S.No.	Parameters	5	4	3	2	1	Total weightage (400)	Percentage	3 scale weightage
1.	Rate how was the courses syllabus offered by the programme giving opportunities to update the basic knowledge	57	20	3	0	0	374	94	2.8
2.	Rate the appropriateness of the sequence of the courses provided by the curriculum	50	27	3	0	0	367	92	2.8
3.	Rate the depth of the syllabus of the courses about the competencies expected by the industry/current global scenario	59	14	7	0	0	372	93	2.8
4.	Rate the sequence of the units in the courses	51	23	6	0	0	365	91	2.7
5.	Rate the adequateness of the textbooks and reference books mentioned for the courses	60	17	3	0	0	377	94	2.8
6.	Rate the syllabus content of the courses in terms of giving opportunities to students towards participating in competitions, internships, field visits, etc.	54	23	3	0	0	371	93	2.8
7.	Rate the design of the courses in terms of extra learning or self-learning	40	35	5	0	0	355	89	2.7
8.	Rate the flexibility in choosing the electives concerning technology advancement	35	40	5	0	0	350	88	2.6
9.	Rate the percentage of the courses offering Laboratory components (including practical's, summer training, business communication skills, ethics, Social responsibility, life skills)	47	28	5	0	0	362	91	2.7
10.	Rate the composition of the courses in terms of social responsibility, ethics, discipline core, discipline electives, self study electives, one credit, projects, etc.	53	19	8	0	0	365	91	2.7
							366	91	2.7

ATTESTED

**Dr. S. RAMABALAN, M.E., Ph.D.,
PRINCIPAL**

**E.G.S. Pillay Engineering College,
Thethi, Nagore - 611 002.
Nagapattinam (Dt) Tamil Nadu.**



E.G.S. PILLAY ENGINEERING COLLEGE (AUTONOMOUS)

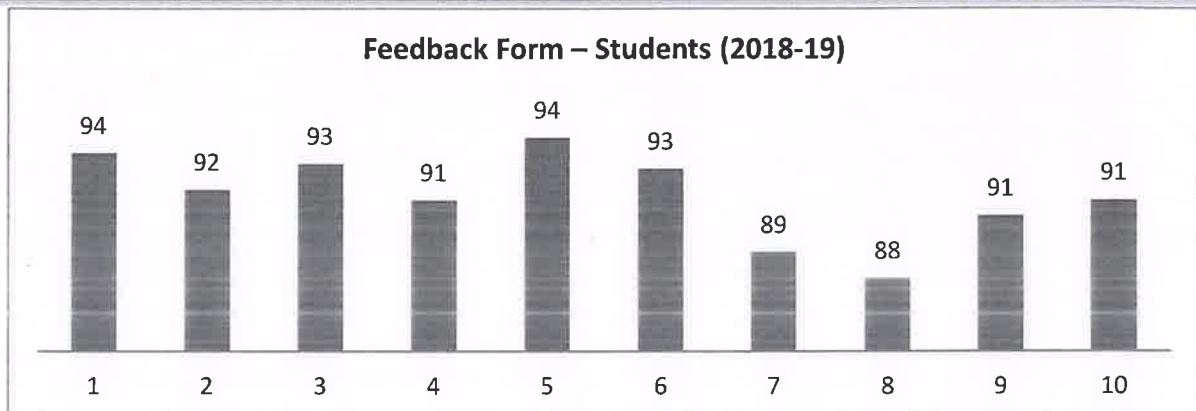
Department of Management Studies

NAGAPATTINAM – 611 002. TAMILNADU, INDIA

Approved by AICTE, New Delhi, Affiliated to Anna University, Chennai

(Accredited by NAAC with 'A' Grade and NBA)

Email: principal@egspec.org website: www.egspec.org Ph: 04365-251112



Interpretation: (2018-19)

- Around 94% of the students opinions that the courses syllabus offered by the programme giving opportunities to update the basic knowledge.
- Around 92% of the students opinions that the sequence of the courses provided by the curriculum is appropriate.
- Around 93% of the students opinions that the depth of the syllabus of the courses about the competencies expected by the industry/current global scenario is very good.
- Around 91 % of the students opinions that the sequence of the units in the courses is good.
- Around 94 % of the students opinions that the textbooks and reference books mentioned for the courses are adequate.
- Around 93% of the students opinions that the syllabus content of the courses in terms of giving opportunities to students towards participating in competitions, internships, field visits are good.
- Around 89% of the students opinions that the design of the courses in terms of extra learning or self-learning is good.
- Around 88% of the students opinions that the flexibility in choosing the electives concerning technology advancement is good.
- Around 91% of the students opinions that the courses offering Laboratory components are good.
- Around 91% of the students opinions that the composition of the courses in terms of social responsibility, ethics, discipline core, discipline electives, self-study electives, one credit, projects, etc are good.

ATTESTED

**Dr. S. RAMABALAN, M.E., Ph.D.,
PRINCIPAL**

**E.G.S. Pillay Engineering College;
Thethi, Nagore - 611 002.
Nagapattinam (Dt) Tamil Nadu.**



E.G.S. PILLAY ENGINEERING COLLEGE (AUTONOMOUS)

Department of Management Studies

NAGAPATTINAM – 611 002. TAMILNADU, INDIA

Approved by AICTE, New Delhi, Affiliated to Anna University, Chennai

(Accredited by NAAC with 'A' Grade and NBA)

Email: principal@egspec.org website: www.egspec.org Ph: 04365-251112

Remarks Received: To improve the communication skills provisions can be made apart from existing courses.

Action Taken Summary: It was implemented to brought-in considerable number of hours for Seminars and Group discussion activities to improve communication of students and it was got added in the regular class time-table.

ATTESTED

**Dr. S. RAMABALAN, M.E., Ph.D.,
PRINCIPAL**

E.G.S. Pillay Engineering College,
Thethi, Nagore - 611 002.
Nagapattinam (Dt) Tamil Nadu.



E.G.S. PILLAY ENGINEERING COLLEGE (AUTONOMOUS)

Department of Management Studies

NAGAPATTINAM – 611 002. TAMILNADU, INDIA

Approved by AICTE, New Delhi, Affiliated to Anna University, Chennai

(Accredited by NAAC with 'A' Grade and NBA)

Email: principal@egspec.org website: www.egspec.org Ph: 04365-251112

Curriculum Design and Development Feedback Form – Students (2019-20)									
S.No.	Parameters	5	4	3	2	1	Total weightage (400)	Percentage	3 scale weightage
1.	Rate how was the courses syllabus offered by the programme giving opportunities to update the basic knowledge	71	9	0	0	0	391	98	2.9
2.	Rate the appropriateness of the sequence of the courses provided by the curriculum	65	15	0	0	0	385	96	2.9
3.	Rate the depth of the syllabus of the courses about the competencies expected by the industry/current global scenario	71	9	0	0	0	391	98	2.9
4.	Rate the sequence of the units in the courses	63	17	0	0	0	383	96	2.9
5.	Rate the adequateness of the textbooks and reference books mentioned for the courses	74	6	0	0	0	394	99	3.0
6.	Rate the syllabus content of the courses in terms of giving opportunities to students towards participating in competitions, internships, field visits, etc.	55	18	7	0	0	368	92	2.8
7.	Rate the design of the courses in terms of extra learning or self-learning	64	6	10	0	0	374	94	2.8
8.	Rate the flexibility in choosing the electives concerning technology advancement	37	38	5	0	0	352	88	2.6
9.	Rate the percentage of the courses offering Laboratory components (including practical's, summer training, business communication skills, ethics, Social responsibility, life skills)	51	26	3	0	0	368	92	2.8
10.	Rate the composition of the courses in terms of social responsibility, ethics, discipline core, discipline electives, self study electives, one credit, projects, etc.	61	10	9	0	0	372	93	2.8
							378	94	2.8

ATTESTED

**Dr. S. RAMABALAN, M.E., Ph.D.,
PRINCIPAL**

**E.G.S. Pillay Engineering College,
Thethi, Nagore - 611 002.
Nagapattinam (Dt) Tamil Nadu.**



E.G.S. PILLAY ENGINEERING COLLEGE (AUTONOMOUS)

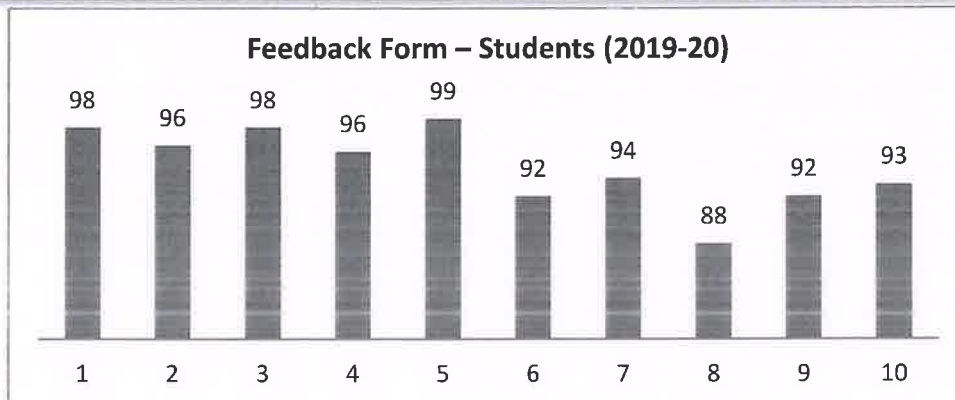
Department of Management Studies

NAGAPATTINAM – 611 002. TAMILNADU, INDIA

Approved by AICTE, New Delhi, Affiliated to Anna University, Chennai

(Accredited by NAAC with 'A' Grade and NBA)

Email: principal@egspec.org website: www.egspec.org Ph: 04365-251112



Interpretation: (2019-20)

- Around 98% of the students opinions that the courses syllabus offered by the programme giving opportunities to update the basic knowledge.
- Around 96% of the students opinions that the sequence of the courses provided by the curriculum is appropriate.
- Around 98% of the students opinions that the depth of the syllabus of the courses about the competencies expected by the industry/current global scenario is very good.
- Around 96 % of the students opinions that the sequence of the units in the courses is good.
- Around 99 % of the students opinions that the textbooks and reference books mentioned for the courses are adequate.
- Around 92% of the students opinions that the syllabus content of the courses in terms of giving opportunities to students towards participating in competitions, internships, field visits are good.
- Around 94% of the students opinions that the design of the courses in terms of extra learning or self-learning is good.
- Around 88% of the students opinions that the flexibility in choosing the electives concerning technology advancement is good.
- Around 92% of the students opinions that the courses offering Laboratory components are good.
- Around 93% of the students opinions that the composition of the courses in terms of social responsibility, ethics, discipline core, discipline electives, self-study electives, one credit, projects, etc are good.

ATTESTED


Dr. S. RAMABALAN, M.E., Ph.D.,
PRINCIPAL
E.G.S. Pillay Engineering College,
Thethi, Nagore - 611 002.
Nagapattinam (Dt) Tamil Nadu.



E.G.S. PILLAY ENGINEERING COLLEGE (AUTONOMOUS)

Department of Management Studies

NAGAPATTINAM – 611 002. TAMILNADU, INDIA

Approved by AICTE, New Delhi, Affiliated to Anna University, Chennai

(Accredited by NAAC with 'A' Grade and NBA)

Email: principal@egspec.org website: www.egspec.org Ph: 04365-251112

Remarks Received: To know more about learning through simulation, specific tools and techniques can be introduced or necessary modifications can be made to meet out such learning.

Action Taken Summary: Based on the received remarks it was decided and implemented a practical course clubbing TORA and applied Operational research to strengthen the skills of the students.

ATTESTED

**Dr. S. RAMABALAN, M.E., Ph.D.,
PRINCIPAL**

**E.G.S. Pillay Engineering College,
Thethi, Nagore - 611 002.
Nagapattinam (Dt) Tamil Nadu.**



E.G.S. PILLAY ENGINEERING COLLEGE (AUTONOMOUS)

Department of Management Studies

NAGAPATTINAM – 611 002. TAMILNADU, INDIA

Approved by AICTE, New Delhi, Affiliated to Anna University, Chennai

(Accredited by NAAC with 'A' Grade and NBA)

Email: principal@egspec.org website: www.egspec.org Ph: 04365-251112

Curriculum Design and Development Feedback Form – Students (2020-21)									
S.No.	Parameters	5	4	3	2	1	Total weightage (400)	Percentage	3 scale weightage
1.	Rate how was the courses syllabus offered by the programme giving opportunities to update the basic knowledge	62	15	3	0	0	379	95	2.8
2.	Rate the appropriateness of the sequence of the courses provided by the curriculum	58	18	4	0	0	374	94	2.8
3.	Rate the depth of the syllabus of the courses about the competencies expected by the industry/current global scenario	62	14	4	0	0	378	95	2.8
4.	Rate the sequence of the units in the courses	55	22	3	0	0	372	93	2.8
5.	Rate the adequateness of the textbooks and reference books mentioned for the courses	65	12	3	0	0	382	96	2.9
6.	Rate the syllabus content of the courses in terms of giving opportunities to students towards participating in competitions, internships, field visits, etc.	52	25	3	0	0	369	92	2.8
7.	Rate the design of the courses in terms of extra learning or self-learning	64	14	2	0	0	382	96	2.9
8.	Rate the flexibility in choosing the electives concerning technology advancement	34	44	2	0	0	352	88	2.6
9.	Rate the percentage of the courses offering Laboratory components (including practical's, summer training, business communication skills, ethics, Social responsibility, life skills)	47	32	1	0	0	366	92	2.7
10.	Rate the composition of the courses in terms of social responsibility, ethics, discipline core, discipline electives, self study electives, one credit, projects, etc.	55	21	4	0	0	371	93	2.8
							373	93	2.8

ATTESTED


Dr. S. RAMABALAN, M.E., Ph.D.,
PRINCIPAL
 E.G.S. Pillay Engineering College,
 Thethi, Nagore - 611 002.
 Nagapattinam (Dt) Tamil Nadu.



E.G.S. PILLAY ENGINEERING COLLEGE (AUTONOMOUS)

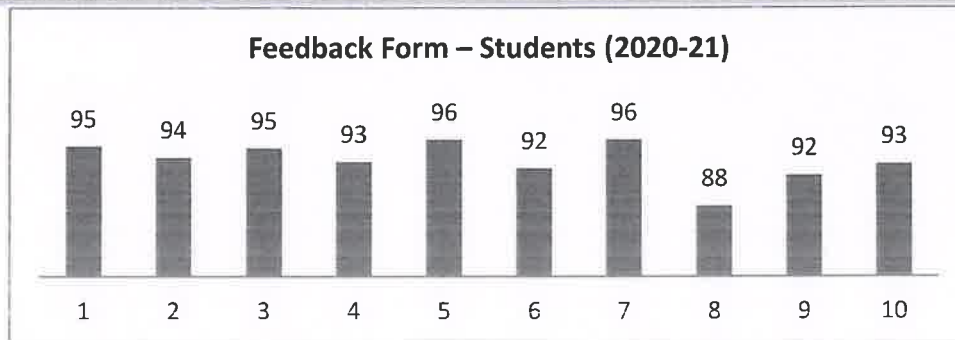
Department of Management Studies

NAGAPATTINAM – 611 002. TAMILNADU, INDIA

Approved by AICTE, New Delhi, Affiliated to Anna University, Chennai

(Accredited by NAAC with 'A' Grade and NBA)

Email: principal@egspec.org website: www.egspec.org Ph: 04365-251112



Interpretation: (2020-21)

- Around 95% of the students opinions that the courses syllabus offered by the programme giving opportunities to update the basic knowledge.
- Around 94% of the students opinions that the sequence of the courses provided by the curriculum is appropriate.
- Around 95% of the students opinions that the depth of the syllabus of the courses about the competencies expected by the industry/current global scenario is very good.
- Around 93 % of the students opinions that the sequence of the units in the courses is good.
- Around 96 % of the students opinions that the textbooks and reference books mentioned for the courses are adequate.
- Around 92% of the students opinions that the syllabus content of the courses in terms of giving opportunities to students towards participating in competitions, internships, field visits are good.
- Around 96% of the students opinions that the design of the courses in terms of extra learning or self-learning is good.
- Around 88% of the students opinions that the flexibility in choosing the electives concerning technology advancement is good.
- Around 92% of the students opinions that the courses offering Laboratory components are good.
- Around 93% of the students opinions that the composition of the courses in terms of social responsibility, ethics, discipline core, discipline electives, self-study electives, one credit, projects, etc are good.

Remarks Received: Initiatives can be made to improve the system skill in focused manner to meet the general expectation of management cadre.

ATTESTED

**Dr. S. RAMABALAN, M.E., Ph.D.,
PRINCIPAL**

**E.G.S. Pillay Engineering College,
Thethi, Nagore - 611 002.
Nagapattinam (Dt) Tamil Nadu.**



E.G.S. PILLAY ENGINEERING COLLEGE (AUTONOMOUS)

Department of Management Studies

NAGAPATTINAM – 611 002. TAMILNADU, INDIA

Approved by AICTE, New Delhi, Affiliated to Anna University, Chennai
(Accredited by NAAC with 'A' Grade and NBA)

Email: principal@egspec.org website: www.egspec.org Ph: 04365-251112

Action Taken Summary: It was decided and implemented that Software skill lab was revised and upgraded as two practical lab courses named Computer applications for business which focused on MS-Office and Data analysis and business modeling which focused on TALLY and IBM-SPSS.

ATTESTED

Dr. S. RAMABALAN, M.E., Ph.D.,
PRINCIPAL

E.G.S. Pillay Engineering College,
Thethi, Nagore - 611 002.
Nagapattinam (Dt) Tamil Nadu.



E.G.S. PILLAY ENGINEERING COLLEGE (AUTONOMOUS)

Department of Management Studies

NAGAPATTINAM – 611 002. TAMILNADU, INDIA

Approved by AICTE, New Delhi, Affiliated to Anna University, Chennai

(Accredited by NAAC with 'A' Grade and NBA)

Email: principal@egspec.org website: www.egspec.org Ph: 04365-251112

Curriculum Design and Development Feedback Form – Students (2021-22)									
S.No.	Parameters	5	4	3	2	1	Total weightage (400)	Percentage	3 scale weightage
1.	Rate how was the courses syllabus offered by the programme giving opportunities to update the basic knowledge	55	22	1	2	0	370	93	2.8
2.	Rate the appropriateness of the sequence of the courses provided by the curriculum	46	29	5	0	0	361	90	2.7
3.	Rate the depth of the syllabus of the courses about the competencies expected by the industry/current global scenario	56	22	0	2	0	372	93	2.8
4.	Rate the sequence of the units in the courses	40	33	7	0	0	353	88	2.6
5.	Rate the adequateness of the textbooks and reference books mentioned for the courses	52	27	1	0	0	371	93	2.8
6.	Rate the syllabus content of the courses in terms of giving opportunities to students towards participating in competitions, internships, field visits, etc.	59	20	1	0	0	378	95	2.8
7.	Rate the design of the courses in terms of extra learning or self-learning	50	24	6	0	0	364	91	2.7
8.	Rate the flexibility in choosing the electives concerning technology advancement	30	45	5	0	0	345	86	2.6
9.	Rate the percentage of the courses offering Laboratory components (including practical's, summer training, business communication skills, ethics, Social responsibility, life skills)	45	29	6	0	0	359	90	2.7
10.	Rate the composition of the courses in terms of social responsibility, ethics, discipline core, discipline electives, self study electives, one credit, projects, etc.	43	23	14	0	0	349	87	2.6
							362	91	2.7

ATTESTED

**Dr. S. RAMABALAN, M.E., Ph.D.,
PRINCIPAL**

E.G.S. Pillay Engineering College,
Thethi, Nagore - 611 002.
Nagapattinam (Dt) Tamil Nadu.



E.G.S. PILLAY ENGINEERING COLLEGE (AUTONOMOUS)

Department of Management Studies

NAGAPATTINAM – 611 002. TAMILNADU, INDIA

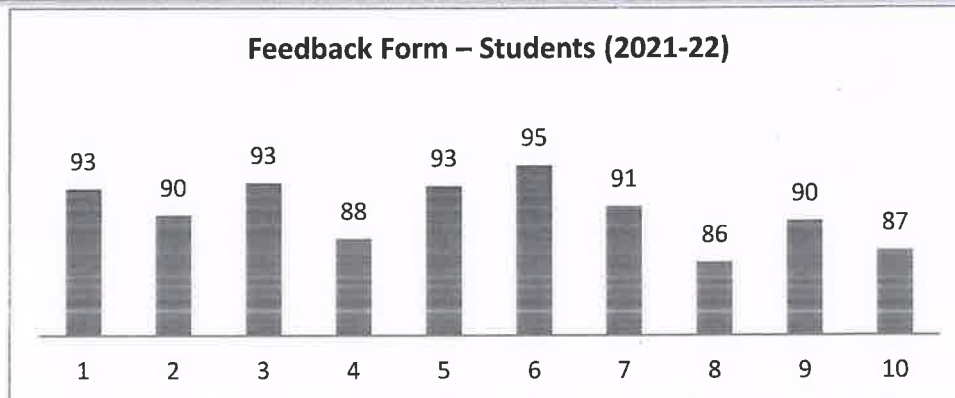
Approved by AICTE, New Delhi, Affiliated to Anna University, Chennai

(Accredited by NAAC with 'A' Grade and NBA)

Email: principal@egspec.org

website: www.egspec.org

Ph: 04365-251112



Interpretation: (2021-22)

- Around 93% of the students opinions that the courses syllabus offered by the programme giving opportunities to update the basic knowledge.
- Around 90% of the students opinions that the sequence of the courses provided by the curriculum is appropriate.
- Around 93% of the students opinions that the depth of the syllabus of the courses about the competencies expected by the industry/current global scenario is very good.
- Around 88 % of the students opinions that the sequence of the units in the courses is good.
- Around 93 % of the students opinions that the textbooks and reference books mentioned for the courses are adequate.
- Around 95% of the students opinions that the syllabus content of the courses in terms of giving opportunities to students towards participating in competitions, internships, field visits are good.
- Around 91% of the students opinions that the design of the courses in terms of extra learning or self-learning is good.
- Around 86% of the students opinions that the flexibility in choosing the electives concerning technology advancement is good.
- Around 90% of the students opinions that the courses offering Laboratory components are good.
- Around 87% of the students opinions that the composition of the courses in terms of social responsibility, ethics, discipline core, discipline electives, self-study electives, one credit, projects, etc are good.

ATTESTED

**Dr. S. RAMABALAN, M.E., Ph.D.,
PRINCIPAL**

**E.G.S. Pillay Engineering College,
Thethi, Nagore - 611 002.
Nagapattinam (Dt) Tamil Nadu.**



E.G.S. PILLAY ENGINEERING COLLEGE (AUTONOMOUS)

Department of Management Studies

NAGAPATTINAM – 611 002. TAMILNADU, INDIA

Approved by AICTE, New Delhi, Affiliated to Anna University, Chennai

(Accredited by NAAC with 'A' Grade and NBA)

Email: principal@egspec.org website: www.egspec.org Ph: 04365-251112

Remarks received: More number of electives courses related to finance specialization can be added. Studying good governance practices in all management subjects seems to be repetitive and vague.

Action Taken Summary: Financial derivatives was roped in to as functional elective in finance specialization, thereby replacing International trade finance. In addition to that a non-functional elective course named corporate governance was included.

ATTESTED

**Dr. S. RAMABALAN, M.E., Ph.D.,
PRINCIPAL**

E.G.S. Pillay Engineering College,
Thethi, Nagore - 611 002.
Nagapattinam (Dt) Tamil Nadu.



E.G.S. PILLAY ENGINEERING COLLEGE (AUTONOMOUS)

NAGAPATTINAM – 611 002. TAMILNADU, INDIA

Approved by AICTE, New Delhi, Affiliated to Anna University, Chennai

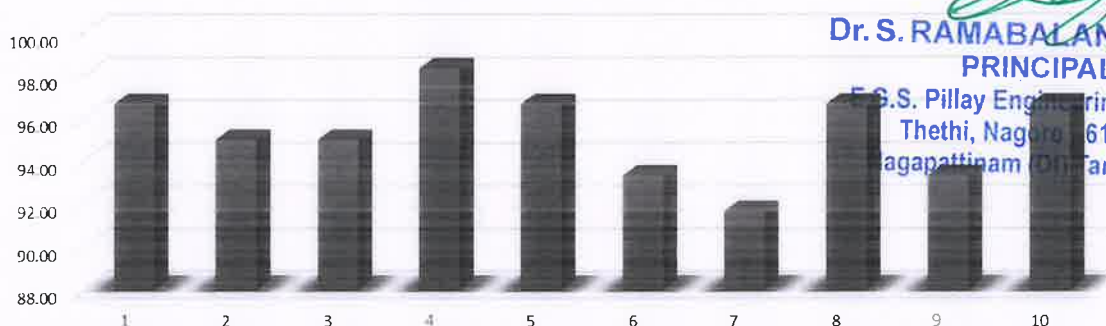
(Accredited by NAAC with 'A' Grade and NBA)

Email: principal@egspsc.org website: www.egspsc.org Ph: 04365-251112

Faculty Feedback on Curriculum and Syllabus: Analysis and Action Taken Report

Faculty Feedback 2017-2018									
Q.No	Parameter	5	4	3	2	1	Total Weightage (60)	Percentage (100)	3 Scale Weightage
1	Rate the structure of the curriculum framed for the programme	11	0	1	0	0	58	96.67	2.9
2	Rate the appropriateness of the sequence of the courses provided by the curriculum	9	3	0	0	0	57	95.00	2.85
3	Rate the depth of the syllabus of the courses about the competencies expected by the industry/current global scenario	10	1	1	0	0	57	95.00	2.85
4	Rate the sequence of the units in the courses	11	1	0	0	0	59	98.33	2.95
5	Rate the distribution of credits to the courses	10	2	0	0	0	58	96.67	2.9
6	Rate the adequateness of the textbooks and reference books mentioned for the courses	9	2	1	0	0	56	93.33	2.8
7	Rate the potential of the students in understanding the course outcomes	9	1	2	0	0	55	91.67	2.75
8	Rate the syllabus content of the courses in terms of giving opportunities to students towards participating in competitions, internships, field visits, etc.	10	2	0	0	0	58	96.67	2.9
9	Rate the experiment list in stimulating the interest of students in the courses	10	0	2	0	0	56	93.33	2.8
10	Rate the composition of the courses in terms of social responsibility, ethics, discipline core, discipline electives, self study electives, one credit, projects, etc.	11	0	1	0	0	58	96.67	2.9
Average Score							57.20	95.33	2.86

Faculty Feedback 2017-2018



ATTESTED

Dr. S. RAMABALAN, M.E., Ph.D.,
PRINCIPAL
E.G.S. Pillay Engineering College,
Thethi, Nagapattinam - 611 002.
Nagapattinam, Tamil Nadu.

Analysis Interpretation:

- 96.67% of teachers strongly agreed that the structure of the curriculum framed for the programme is well defined.
- 95% of teachers strongly agreed that the appropriateness of the sequence of the courses provided by the curriculum was excellent.
- 96.67 of teachers agreed that the syllabus of the courses is as per the industry/current global scenario.
- 96.67 of teachers strongly agreed that the courses have an excellent sequence of units.
- 93.33 of teachers agreed that the credits were distributed appropriately for the courses.
- 93.33 of teachers agreed that the text and reference books prescribed for the courses are adequate. It is suggested that the latest edition/version of the books be included in the reference section.
- 91.67% of teachers agreed that the course outcomes are understandable for students. It is suggested that we may follow most applied level verbs in course outcomes.
- 93.33% of teachers agreed that courses have opportunities for students to participate in competitions, internships, field visits, etc.
- 93.33% of teachers agreed that the experiment list is good enough to stimulate the interest of students in the courses.
- 96.67% of teachers agreed that the courses are composed in terms of social responsibility, ethics, discipline core, discipline electives, self-study electives, one credit, projects, etc.



E.G.S. PILLAY ENGINEERING COLLEGE (AUTONOMOUS)

NAGAPATTINAM – 611 002. TAMILNADU, INDIA

Approved by AICTE, New Delhi, Affiliated to Anna University, Chennai

(Accredited by NAAC with 'A' Grade and NBA)

Email: principal@egspec.org website: www.egspec.org Ph: 04365-251112

Remarks Received:

To better understand the syllabus, students may be encouraged to undergo industry interactions.

Students may better understand if Accounts theory paper and Tally practical course are offered together. Also Operations Management theory paper and Tora Practical course.

Action Taken Summary:

Theory related Practical courses are given to stimulate the interest of students in courses.

In order to stimulate student interest in courses, theory-related practical courses were introduced. These courses aim to provide students with hands-on experience and a better understanding of the theories taught in class. The practical courses were well received by students and were instrumental in increasing their engagement and motivation in the subject.

Regular interaction with industry are motivated to have better exposure in current industrial and global trends and practices.

To improve student exposure to current industrial and global trends and practices, regular interactions with industry were encouraged. This was achieved through industry visits, guest lectures, and internships. These interactions provided students with a better understanding of the real-world applications of the concepts learned in class and helped them to develop a deeper appreciation for their chosen field of study.

ATTESTED

Dr. S. RAMABALAN, M.E., Ph.D.,
PRINCIPAL

E.G.S. Pillay Engineering College,
Thethi, Nagore - 611 002.
Nagapattinam (Dt) Tamil Nadu.



E.G.S. PILLAY ENGINEERING COLLEGE (AUTONOMOUS)

NAGAPATTINAM – 611 002. TAMILNADU, INDIA

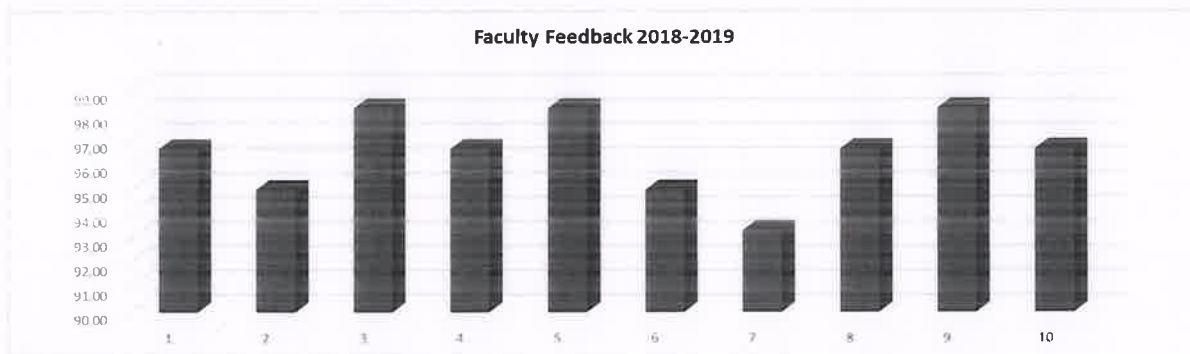
Approved by AICTE, New Delhi, Affiliated to Anna University, Chennai

(Accredited by NAAC with 'A' Grade and NBA)

Email: principal@egspec.org website: www.egspec.org Ph: 04365-251112

Faculty Feedback on Curriculum and Syllabus: Analysis and Action Taken Report

Faculty Feedback 2018-2019									
Q.No	Parameter	5	4	3	2	1	Total Weightage (60)	Percentage (100)	3 Scale Weightage
1	Rate the structure of the curriculum framed for the programme	10	2	0	0	0	58	96.67	2.9
2	Rate the appropriateness of the sequence of the courses provided by the curriculum	9	3	0	0	0	57	95.00	2.85
3	Rate the depth of the syllabus of the courses about the competencies expected by the industry/current global scenario	11	1	0	0	0	59	98.33	2.95
4	Rate the sequence of the units in the courses	10	2	0	0	0	58	96.67	2.9
5	Rate the distribution of credits to the courses	11	1	0	0	0	59	98.33	2.95
6	Rate the adequateness of the textbooks and reference books mentioned for the courses	9	3	0	0	0	57	95.00	2.85
7	Rate the potential of the students in understanding the course outcomes	9	2	1	0	0	56	93.33	2.8
8	Rate the syllabus content of the courses in terms of giving opportunities to students towards participating in competitions, internships, field visits, etc.	11	0	1	0	0	58	96.67	2.9
9	Rate the experiment list in stimulating the interest of students in the courses	11	1	0	0	0	59	98.33	2.95
10	Rate the composition of the courses in terms of social responsibility, ethics, discipline core, discipline electives, self study electives, one credit, projects, etc.	10	2	0	0	0	58	96.67	2.9
Average Score							57.90	96.50	2.90



Analysis Interpretation:

- 96.67% of teachers strongly agreed that the structure of the curriculum framed for the programme is well defined.
- 95% of teachers strongly agreed that the appropriateness of the sequence of the courses provided by the curriculum was excellent.
- 98.33% of teachers agreed that the syllabus of the courses is as per the industry/current global scenario.
- 96.67% of teachers strongly agreed that the courses have an excellent sequence of units.
- 98.33% of teachers agreed that the credits were distributed appropriately for the courses.
- 95% of teachers agreed that the text and reference books prescribed for the courses are adequate. It is suggested that the latest edition/version of the books be included in the reference section.
- 93.33% of teachers agreed that the course outcomes are understandable for students. It is suggested that we may follow most applied level verbs in course outcomes.
- 96.67% of teachers agreed that courses have opportunities for students to participate in competitions, internships, field visits, etc.
- 98.33% of teachers agreed that the experiment list is good enough to stimulate the interest of students in the courses.
- 96.67% of teachers agreed that the courses are composed in terms of social responsibility, ethics, discipline core, discipline electives, self-study electives, one credit, projects, etc.

Remarks Received:

Textbooks may be included in the syllabus apart from references.

Markowitz model may be added in Security Analysis and Portfolio Management.

Action Taken Summary:

Apart from references, a few textbooks were listed in the syllabus. To strengthen Security Analysis and Portfolio Management, Markowitz model has been added to the syllabus.

ATTESTED

Dr. S. RAMABALAN, M.E., Ph.D.,
PRINCIPAL
 E.G.S. Pillay Engineering College
 Thethi, Nagore - 611 002.
 Nagapattinam (Dt) Tamil Nadu.



E.G.S. PILLAY ENGINEERING COLLEGE (AUTONOMOUS)

NAGAPATTINAM – 611 002. TAMILNADU, INDIA

Approved by AICTE, New Delhi, Affiliated to Anna University, Chennai

(Accredited by NAAC with 'A' Grade and NBA)

Email: principal@egspec.org

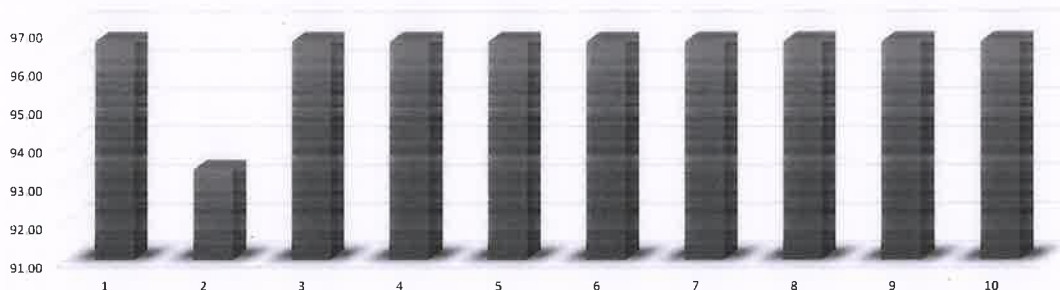
website: www.egspec.org

Ph: 04365-251112

Faculty Feedback on Curriculum and Syllabus: Analysis and Action Taken Report

Faculty Feedback 2019-2020									
S.No.	Parameter	5	4	3	2	1	Total Weightage (60)	Percentage (100)	3 Scale Weightage
1	Rate the structure of the curriculum framed for the programme	10	2	0	0	0	58	96.67	2.9
2	Rate the appropriateness of the sequence of the courses provided by the curriculum	9	2	1	0	0	56	93.33	2.8
3	Rate the depth of the syllabus of the courses about the competencies expected by the industry/current global scenario	10	2	0	0	0	58	96.67	2.9
4	Rate the sequence of the units in the courses	10	2	0	0	0	58	96.67	2.9
5	Rate the distribution of credits to the courses	10	2	0	0	0	58	96.67	2.9
6	Rate the adequateness of the textbooks and reference books mentioned for the courses	10	2	0	0	0	58	96.67	2.9
7	Rate the potential of the students in understanding the course outcomes	10	2	0	0	0	58	96.67	2.9
8	Rate the syllabus content of the courses in terms of giving opportunities to students towards participating in competitions, internships, field visits, etc.	11	0	1	0	0	58	96.67	2.9
9	Rate the experiment list in stimulating the interest of students in the courses	10	2	0	0	0	58	96.67	2.9
10	Rate the composition of the courses in terms of social responsibility, ethics, discipline core, discipline electives, self study electives, one credit, projects, etc.	10	2	0	0	0	58	96.67	2.9
Average Score							57.80	96.33	2.89

Faculty Feedback 2019-2020



Analysis Interpretation:

- 96.67% of teachers strongly agreed that the structure of the curriculum framed for the programme is well defined.
- 93.33% of teachers strongly agreed that the appropriateness of the sequence of the courses provided by the curriculum was excellent.
- 96.67% of teachers agreed that the syllabus of the courses is as per the industry/current global scenario.
- 96.67% of teachers strongly agreed that the courses have an excellent sequence of units.
- 96.67% of teachers agreed that the credits were distributed appropriately for the courses.
- 96.67% of teachers agreed that the text and reference books prescribed for the courses are adequate. It is suggested that the latest edition/version of the books be included in the reference section.
- 96.67% of teachers agreed that the course outcomes are understandable for students. It is suggested that we may follow most applied level verbs in course outcomes.
- 96.67% of teachers agreed that courses have opportunities for students to participate in competitions, internships, field visits, etc.
- 96.67% of teachers agreed that the experiment list is good enough to stimulate the interest of students in the courses.
- 96.67% of teachers agreed that the courses are composed in terms of social responsibility, ethics, discipline core, discipline electives, self-study electives, one credit, projects, etc.

Remarks Received:

Industry interaction motivation will help students to get more exposure in projects and placements.

Case discussion, seminar and group discussion may be encouraged in class.

Action Taken Summary:

Apart from industrial visits, one day field visit per year is put into practice. Concentration on case studies, seminar and GDs is given every semester.

ATTESTED

Dr. S. RAMABALAN, M.E., Ph.D.,

PRINCIPAL

E.G.S. Pillay Engineering College,

Thethi, Nagore - 611 002.

Nagapattinam (Dt) Tamil Nadu.



E.G.S. PILLAY ENGINEERING COLLEGE (AUTONOMOUS)

NAGAPATTINAM – 611 002. TAMILNADU, INDIA

Approved by AICTE, New Delhi, Affiliated to Anna University, Chennai

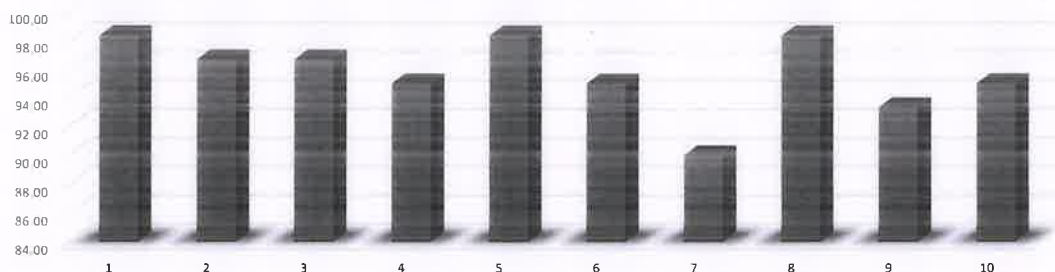
(Accredited by NAAC with 'A' Grade and NBA)

Email: principal@egspec.org website: www.egspec.org Ph: 04365-251112

Faculty Feedback on Curriculum and Syllabus: Analysis and Action Taken Report

Faculty Feedback 2020-2021									
S.No.	Parameter	5	4	3	2	1	Total Weightage (60)	Percentage (100)	3 Scale Weightage
1	Rate the structure of the curriculum framed for the programme	11	1	0	0	0	59	98.33	2.95
2	Rate the appropriateness of the sequence of the courses provided by the curriculum	10	2	0	0	0	58	96.67	2.9
3	Rate the depth of the syllabus of the courses about the competencies expected by the industry/current global scenario	10	2	0	0	0	58	96.67	2.9
4	Rate the sequence of the units in the courses	10	1	1	0	0	57	95.00	2.85
5	Rate the distribution of credits to the courses	11	1	0	0	0	59	98.33	2.95
6	Rate the adequateness of the textbooks and reference books mentioned for the courses	9	3	0	0	0	57	95.00	2.85
7	Rate the potential of the students in understanding the course outcomes	7	4	1	0	0	54	90.00	2.7
8	Rate the syllabus content of the courses in terms of giving opportunities to students towards participating in competitions, internships, field visits, etc.	11	1	0	0	0	59	98.33	2.95
9	Rate the experiment list in stimulating the interest of students in the courses	9	2	1	0	0	56	93.33	2.8
10	Rate the composition of the courses in terms of social responsibility, ethics, discipline core, discipline electives, self study electives, one credit, projects, etc.	9	3	0	0	0	57	95.00	2.85
Average Score							57.40	95.67	2.87

Faculty Feedback 2020-2021



Analysis Interpretation:

- 98.33% of teachers strongly agreed that the structure of the curriculum framed for the programme is well defined.
- 96.67% of teachers strongly agreed that the appropriateness of the sequence of the courses provided by the curriculum was excellent.
- 96.67% of teachers agreed that the syllabus of the courses is as per the industry/current global scenario.
- 95% of teachers strongly agreed that the courses have an excellent sequence of units.
- 98.33% of teachers agreed that the credits were distributed appropriately for the courses.
- 95% of teachers agreed that the text and reference books prescribed for the courses are adequate. It is suggested that the latest edition/version of the books be included in the reference section.
- 90% of teachers agreed that the course outcomes are understandable for students. It is suggested that we may follow most applied level verbs in course outcomes.
- 96.67% of teachers agreed that courses have opportunities for students to participate in competitions, internships, field visits, etc.
- 98.33% of teachers agreed that the experiment list is good enough to stimulate the interest of students in the courses.
- 95% of teachers agreed that the courses are composed in terms of social responsibility, ethics, discipline core, discipline electives, self-study electives, one credit, projects, etc.

Remarks Received:

In accounting for decision making, it is better to teach fund flow first and Cash flow next which help the students learn the topic better.

In financial management, the topic Cost of Capital in Unit-II may be transferred to Unit III. The Unit III is overloaded with many topics. In Computer Applications for Business, it is insisted to concentrate more experiments on Advanced MS-Excel in this paper rather than MS Word.

ATTESTED

Dr. S. RAMABALAN, M.E., Ph.D.,
PRINCIPAL
E.G.S. Pillay Engineering College,
Thethi, Nagore - 611 002.
Nagapattinam (Dt) Tamil Nadu.



E.G.S. PILLAY ENGINEERING COLLEGE (AUTONOMOUS)

NAGAPATTINAM – 611 002. TAMILNADU, INDIA

Approved by AICTE, New Delhi, Affiliated to Anna University, Chennai

(Accredited by NAAC with 'A' Grade and NBA)

Email: principal@egspec.org

website: www.egspec.org

Ph: 04365-251112

It is suggested to include "Supply Chain Financing" in this course. It is suggested that OTCEI may be included in Unit 1 in Security Analysis and Portfolio Management.

Action Taken Summary:

The following action has been taken in response to the recommendations for improvement in Accounting, Financial Management, and Computer Applications for Business courses:

Accounting for Decision Making:

It has been decided to teach Cash Flow statement before Fund Flow statement in accounting for decision-making courses. The course content and teaching methodology have been revised to incorporate this change. The new approach has been tested and implemented in the current semester, and initial feedback from students indicates a better understanding of the topic.

Financial Management:

The topic of Cost of Capital in Unit-II has been transferred to Unit-III. The course content has been reviewed, and other topics have been re-arranged to balance the workload in Unit III. The revised course content has been implemented from the current semester.

Computer Applications for Business:

The course content for Advanced MS Excel has been given more emphasis than MS Word. The teaching methodology has been revised to include more hands-on exercises and practical applications of the software. The revised course content has been implemented from the current semester.

Supply Chain Financing and OTCEI:

Supply Chain Financing has been included in the course content for Computer Applications for Business, and OTCEI has been added to Unit 1 in Security Analysis and Portfolio Management. The course content has been reviewed, and the syllabus has been updated accordingly. The revised course content has been implemented from the current semester.

ATTESTED

Dr. S. RAMABALAN, M.E., Ph.D.,
PRINCIPAL

E.G.S. Pillay Engineering College,
Thethi, Nagore - 611 002.
Nagapattinam (Dt) Tamil Nadu.



E.G.S. PILLAY ENGINEERING COLLEGE (AUTONOMOUS)

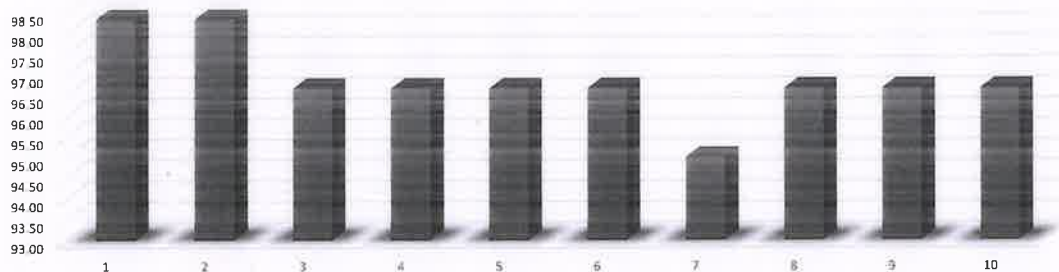
NAGAPATTINAM – 611 002. TAMILNADU, INDIA
Approved by AICTE, New Delhi, Affiliated to Anna University, Chennai
(Accredited by NAAC with 'A' Grade and NBA)

Email: principal@egspec.org website: www.egspec.org Ph: 04365-251112

Faculty Feedback on Curriculum and Syllabus: Analysis and Action Taken Report

Faculty Feedback 2021-2022									
S.No.	Parameter	5	4	3	2	1	Total Weightage (60)	Percentage (100)	3 Scale Weightage
1	Rate the structure of the curriculum framed for the programme	11	1	0	0	0	59	98.33	2.95
2	Rate the appropriateness of the sequence of the courses provided by the curriculum	11	1	0	0	0	59	98.33	2.95
3	Rate the depth of the syllabus of the courses about the competencies expected by the industry/current global scenario	10	2	0	0	0	58	96.67	2.9
4	Rate the sequence of the units in the courses	10	2	0	0	0	58	96.67	2.9
5	Rate the distribution of credits to the courses	10	2	0	0	0	58	96.67	2.9
6	Rate the adequateness of the textbooks and reference books mentioned for the courses	10	2	0	0	0	58	96.67	2.9
7	Rate the potential of the students in understanding the course outcomes	10	1	1	0	0	57	95.00	2.85
8	Rate the syllabus content of the courses in terms of giving opportunities to students towards participating in competitions, internships, field visits, etc.	10	2	0	0	0	58	96.67	2.9
9	Rate the experiment list in stimulating the interest of students in the courses	10	2	0	0	0	58	96.67	2.9
10	Rate the composition of the courses in terms of social responsibility, ethics, discipline core, discipline electives, self study electives, one credit, projects, etc.	10	2	0	0	0	58	96.67	2.9
Average Score							58.10	96.83	2.91

Faculty Feedback 2021-2022



Analysis Interpretation:

- 98.33% of teachers strongly agreed that the structure of the curriculum framed for the programme is well defined.
- 98.33% of teachers strongly agreed that the appropriateness of the sequence of the courses provided by the curriculum was excellent.
- 96.67% of teachers agreed that the syllabus of the courses is as per the industry/current global scenario.
- 96.67% of teachers strongly agreed that the courses have an excellent sequence of units.
- 96.67.33% of teachers agreed that the credits were distributed appropriately for the courses.
- 96.67% of teachers agreed that the text and reference books prescribed for the courses are adequate. It is suggested that the latest edition/version of the books be included in the reference section.
- 95% of teachers agreed that the course outcomes are understandable for students. It is suggested that we may follow most applied level verbs in course outcomes.
- 96.67% of teachers agreed that courses have opportunities for students to participate in competitions, internships, field visits, etc.
- 96.67% of teachers agreed that the experiment list is good enough to stimulate the interest of students in the courses.
- 96.67% of teachers agreed that the courses are composed in terms of social responsibility, ethics, discipline core, discipline electives, self-study electives, one credit, projects, etc.

Remarks Received:

Financial Derivatives may be introduced as an elective in the 4th semester instead of International Trade Finance.
Corporate Governance may be introduced as an open elective in the 3rd semester.

Action Taken Summary:

Financial Derivatives:

Financial Derivatives have been introduced as an elective in the 4th semester instead of International Trade Finance. The course content has been developed, keeping in mind the industry requirements and students' interests.

ATTESTED

[Signature]
Dr. S. RAMABALAN, M.E., Ph.D.,
PRINCIPAL

E.G.S. Pillay Engineering College,

Nagapattinam (Dt.) Tamil Nadu - 611 002



E.G.S. PILLAY ENGINEERING COLLEGE (AUTONOMOUS)

NAGAPATTINAM – 611 002. TAMILNADU, INDIA

Approved by AICTE, New Delhi, Affiliated to Anna University, Chennai

(Accredited by NAAC with 'A' Grade and NBA)

Email: principal@egspec.org

website: www.egspec.org

Ph: 04365-251112

Options, Futures, Swaps, and other derivative instruments. The course is designed to help students understand the practical applications of Financial Derivatives in the financial markets. The students have shown a keen interest in the course, and the initial feedback from them is positive.

Corporate Governance:

Corporate Governance has been introduced as an open elective in the 3rd semester. The course content has been developed, keeping in mind the emerging trends in Corporate Governance and the importance of ethical business practices. The curriculum includes topics like Board structure, Shareholder rights, Transparency, Accountability, and Corporate Social Responsibility. The course is designed to help students understand the importance of good corporate governance and its impact on the company's performance. The students have shown a keen interest in the course, and the initial feedback from them is positive.

ATTESTED

**Dr. S. RAMABALAN, M.E., Ph.D.,
PRINCIPAL**

E.G.S. Pillay Engineering College.

Thethi, Nagore - 611 002.

Nagapattinam (Dt) Tamil Nadu.

**E.G.S. PILLAY ENGINEERING COLLEGE (AUTONOMOUS)**

NAGAPATTINAM – 611 002. TAMILNADU, INDIA

Approved by AICTE, New Delhi, Affiliated to Anna University, Chennai

(Accredited by NAAC with 'A' Grade and NBA)

Email: principal@egspec.orgwebsite: www.egspec.org

Ph: 04365-251112

Employer Feedback on Curriculum and Syllabus: Analysis and Action Taken Report

Employer Feedback 2017-18									
Q.No	Parameter	5	4	3	2	1	Total Weightage (15)	Percentage (100)	3 Scale Weightage
1	Rate the structure of the programme	2	1	0	0	0	14	93	2.8
2	Rate the appropriateness of the sequence of the courses in the curriculum	1	2	0	0	0	13	87	2.7
3	Rate the depth of the syllabus by the industry/current global scenario	2	1	0	0	0	14	93	2.8
4	Rate the adequateness of flexibility available in the choice of courses to the students	3	0	0	0	0	15	100	3
5	Rate the adequateness of courses offered in providing solutions to the issues relevant to gender, environment, and sustainability	2	1	0	0	0	14	93	2.8
6	Rate the adequateness of courses related to job oriented, skill-based, and value-oriented towards employability	2	1	0	0	0	14	93	2.8
7	Rate the syllabus content to bridge the gap between academia and industry	3	0	0	0	0	15	100	3
8	Rate the course components (Basic science, basic engineering, humanities, ethics, professional core, professional core, professional elective, open elective, projects etc.)	3	0	0	0	0	15	100	3
AVERAGE SCORE							14.25	94.88	2.86

ATTESTED**Dr. S. RAMABALAN, M.E., Ph.D.,****PRINCIPAL****E.G.S. Pillay Engineering College,****Thethi, Nagore - 611 002.****Nagapattinam (Dt) Tamil Nadu.**



E.G.S. PILLAY ENGINEERING COLLEGE (AUTONOMOUS)

NAGAPATTINAM – 611 002. TAMILNADU, INDIA

Approved by AICTE, New Delhi, Affiliated to Anna University, Chennai

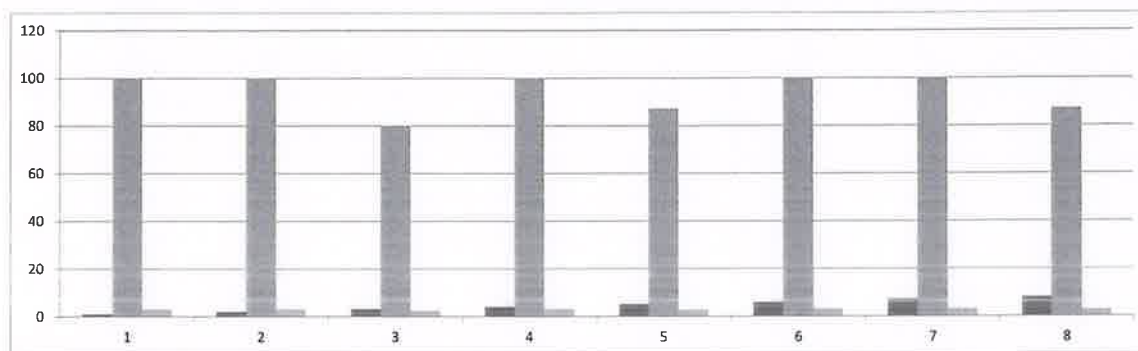
(Accredited by NAAC with 'A' Grade and NBA)

Email: principal@egspec.org

website: www.egspec.org

Ph: 04365-251112

Employer Feedback 2017-18



Analysis Interpretation:

1. 93% of employers strongly agreed that the structure of the curriculum framed for the programme is well defined.
2. 87% of employers strongly agreed that the appropriateness of the sequence of the courses provided by the curriculum was good.
3. 93% of employers agreed that the syllabus of the courses is as per the industry/current global scenario.
4. 100% of employers strongly agreed that the courses have an adequateness of flexibility available .
5. 93% of employers agreed that the courses were offered for the courses.
6. 93% of employers agreed that the courses related to job oriented, skill based and value oriented.
7. 100% of employers agreed that the syllabus content to bridge the gap between academia and industry.
8. 100% of employers agreed that the courses are composed in terms of social responsibility, ethics, discipline core, discipline electives, self-study electives, one credit, projects, etc.

Remarks Received:

International business management course outcomes can be strengthened

Action Taken Summary:

Course outcomes of international management can be revised.

ATTESTED


Dr. S. RAMABALAN, M.E., Ph.D.,
PRINCIPAL

E.G.S. Pillay Engineering College,
Thethi, Nagore - 611 002.
Nagapattinam (Dt) Tamil Nadu.



E.G.S. PILLAY ENGINEERING COLLEGE (AUTONOMOUS)

NAGAPATTINAM – 611 002. TAMILNADU, INDIA

Approved by AICTE, New Delhi, Affiliated to Anna University, Chennai

(Accredited by NAAC with 'A' Grade and NBA)

Email: principal@egspec.org

website: www.egspec.org

Ph: 04365-251112

Employer Feedback on Curriculum and Syllabus: Analysis and Action Taken Report

Employer Feedback 2018-19									
Q.No	Parameter	5	4	3	2	1	Total Weightage (15)	Percentage (100)	3 Scale Weightage
1	Rate the structure of the programme	2	1	0	0	0	14	93	2.8
2	Rate the appropriateness of the sequence of the courses in the curriculum	2	1	0	0	0	14	93	2.8
3	Rate the depth of the syllabus by the industry/current global scenario	0	3	0	0	0	12	80	2.4
4	Rate the adequateness of flexibility available in the choice of courses to the students	2	1	0	0	0	14	93	2.8
5	Rate the adequateness of courses offered in providing solutions to the issues relevant to gender, environment, and sustainability	2	1	0	0	0	14	93	2.8
6	Rate the adequateness of courses related to job oriented, skill-based, and value-oriented towards employability	1	2	0	0	0	13	87	2.7
7	Rate the syllabus content to bridge the gap between academia and industry	2	1	0	0	0	14	93	2.8
8	Rate the course components (Basic science, basic engineering, humanities, ethics, professional core, professional core, professional elective, open elective, projects etc.)	2	1	0	0	0	14	93	2.8
AVERAGE SCORE							13.63	90.63	2.74

ATTESTED

**Dr. S. RAMABALAN, M.E., Ph.D.,
PRINCIPAL**

**E.G.S. Pillay Engineering College,
Thethi, Nagore - 611 002.
Nagapattinam (Dt) Tamil Nadu.**



E.G.S. PILLAY ENGINEERING COLLEGE (AUTONOMOUS)

NAGAPATTINAM – 611 002. TAMILNADU, INDIA

Approved by AICTE, New Delhi, Affiliated to Anna University, Chennai

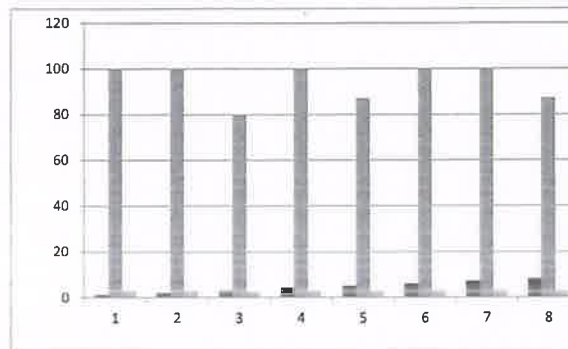
(Accredited by NAAC with 'A' Grade and NBA)

Email: principal@egspec.org

website: www.egspec.org

Ph: 04365-251112

Employer Feedback 2018-19



Analysis Interpretation:

1. 93% of employers strongly agreed that the structure of the curriculum framed for the programme is well defined.
2. 93% of employers strongly agreed that the appropriateness of the sequence of the courses provided by the curriculum was good.
3. 80% of employers agreed that the syllabus of the courses is as per the industry/current global scenario.
4. 93% of employers strongly agreed that the courses have an adequateness of flexibility available .
5. 93% of employers agreed that the courses were offered for the courses.
6. 87% of employers agreed that the courses related to job oriented, skill based and value oriented.
7. 93% of employers agreed that the syllabus content to bridge the gap between academia and industry.
8. 93% of employers agreed that the courses are composed in terms of social responsibility, ethics, discipline core, discipline electives, self-study electives, one credit, projects, etc.

Remarks Received:

TORA can be added as operations research tool

Action Taken Summary:

TORA is added in 2nd semester lab course.

ATTESTED

Dr. S. RAMABALAN, M.E., Ph.D.
PRINCIPAL

E.G.S. Pillay Engineering College,
Thethi, Nagore - 611 002.
Nagapattinam (Dt) Tamil Nadu.



E.G.S. PILLAY ENGINEERING COLLEGE (AUTONOMOUS)

NAGAPATTINAM – 611 002. TAMILNADU, INDIA

Approved by AICTE, New Delhi, Affiliated to Anna University, Chennai

(Accredited by NAAC with 'A' Grade and NBA)

Email: principal@egspegc.org

website: www.egspegc.org

Ph: 04365-251112

Employer Feedback on Curriculum and Syllabus: Analysis and Action Taken Report

Employer Feedback 2019-20									
Q.No	Parameter	5	4	3	2	1	Total Weightage (15)	Percentage (100)	3 Scale Weightage
1	Rate the structure of the programme	3	0	0	0	0	15	100	3
2	Rate the appropriateness of the sequence of the courses in the curriculum	3	0	0	0	0	15	100	3
3	Rate the depth of the syllabus by the industry/current global scenario	3	0	0	0	0	15	100	3
4	Rate the adequateness of flexibility available in the choice of courses to the students	1	1	1	0	0	12	80	2.4
5	Rate the adequateness of courses offered in providing solutions to the issues relevant to gender, environment, and sustainability	2	1	0	0	0	14	93	2.8
6	Rate the adequateness of courses related to job oriented, skill-based, and value-oriented towards employability	3	0	0	0	0	15	100	3
7	Rate the syllabus content to bridge the gap between academia and industry	2	1	0	0	0	14	93	2.8
8	Rate the course components (Basic science, basic engineering, humanities, ethics, professional core, professional core, professional elective, open elective, projects etc.)	2	1	0	0	0	14	93	2.8
AVERAGE SCORE							14.25	94.88	2.85

ATTESTED

**Dr. S. RAMABALAN, M.E., Ph.D.,
PRINCIPAL**

**E.G.S. Pillay Engineering College,
Thethi, Nagore - 611 002.
Nagapattinam (Dt) Tamil Nadu.**



E.G.S. PILLAY ENGINEERING COLLEGE (AUTONOMOUS)

NAGAPATTINAM – 611 002. TAMILNADU, INDIA

Approved by AICTE, New Delhi, Affiliated to Anna University, Chennai

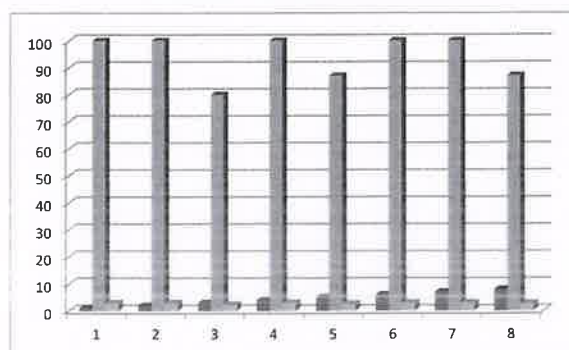
(Accredited by NAAC with 'A' Grade and NBA)

Email: principal@egspec.org

website: www.egspec.org

Ph: 04365-251112

Employer Feedback 2019-20



Analysis Interpretation:

1. 100% of employers strongly agreed that the structure of the curriculum framed for the programme is well defined.
2. 100% of employers strongly agreed that the appropriateness of the sequence of the courses provided by the curriculum was good.
3. 100% of employers agreed that the syllabus of the courses is as per the industry/current global scenario.
4. 80% of employers strongly agreed that the courses have an adequateness of flexibility available .
5. 93% of employers agreed that the courses were offered for the courses.
6. 100% of employers agreed that the courses related to job oriented, skill based and value oriented.
7. 93% of employers agreed that the syllabus content to bridge the gap between academia and industry.
8. 93% of employers agreed that the courses are composed in terms of social responsibility, ethics, discipline core, discipline electives, self-study electives, one credit, projects, etc.

Remarks Received:

Cost of capital(Financial Management) transfer from unit 2 to 3.

Action Taken Summary:

Cost of capital(Financial Management) is moved to unit 3.

ATTESTED


Dr. S. RAMABALAN, M.E., Ph.D.,
PRINCIPAL

E.G.S. Pillay Engineering College,
Thethi, Nagore - 611 002.
Nagapattinam (Dt) Tamil Nadu.



E.G.S. PILLAY ENGINEERING COLLEGE (AUTONOMOUS)

NAGAPATTINAM – 611 002. TAMILNADU, INDIA
Approved by AICTE, New Delhi, Affiliated to Anna University, Chennai
(Accredited by NAAC with 'A' Grade and NBA)

Email: principal@egspec.org website: www.egspec.org Ph: 04365-251112

Employer Feedback on Curriculum and Syllabus: Analysis and Action Taken Report

Employer Feedback 2020-21									
Q.No	Parameter	5	4	3	2	1	Total Weightage (15)	Percentage (100)	3 Scale Weightage
1	Rate the structure of the programme	3	0	0	0	0	15	100	3
2	Rate the appropriateness of the sequence of the courses in the curriculum	3	0	0	0	0	15	100	3
3	Rate the depth of the syllabus by the industry/current global scenario	2	1	0	0	0	14	93	2.8
4	Rate the adequateness of flexibility available in the choice of courses to the students	3	0	0	0	0	15	100	3
5	Rate the adequateness of courses offered in providing solutions to the issues relevant to gender, environment, and sustainability	3	0	0	0	0	15	100	3
6	Rate the adequateness of courses related to job oriented, skill-based, and value-oriented towards employability	0	3	0	0	0	12	80	2.4
7	Rate the syllabus content to bridge the gap between academia and industry	3	0	0	0	0	15	100	3
8	Rate the course components (Basic science, basic engineering, humanities, ethics, professional core, professional core, professional elective, open elective, projects etc.)	1	2	0	0	0	13	87	2.7
AVERAGE SCORE							14.25	95.00	2.86

ATTESTED

Dr. S. RAMABALAN, M.E., Ph.D.
PRINCIPAL
E.G.S. Pillay Engineering College,
Thethi, Nagore - 611 002.
Nagapattinam (Dt) Tamil Nadu.



E.G.S. PILLAY ENGINEERING COLLEGE (AUTONOMOUS)

NAGAPATTINAM – 611 002. TAMILNADU, INDIA

Approved by AICTE, New Delhi, Affiliated to Anna University, Chennai

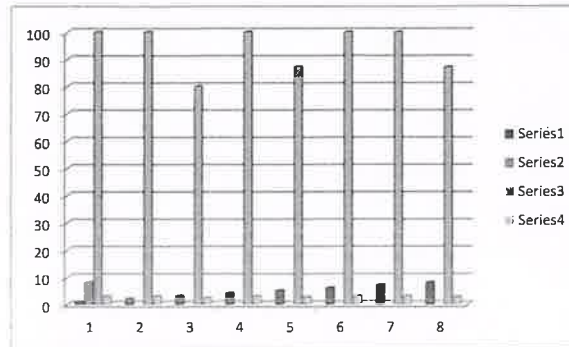
(Accredited by NAAC with 'A' Grade and NBA)

Email: principal@egspec.org

website: www.egspec.org

Ph: 04365-251112

Employer Feedback 2020-21



Analysis Interpretation:

1. 100% of employers strongly agreed that the structure of the curriculum framed for the programme is well defined.
2. 100% of employers strongly agreed that the appropriateness of the sequence of the courses provided by the curriculum was good.
3. 93% of employers agreed that the syllabus of the courses is as per the industry/current global scenario.
4. 100% of employers strongly agreed that the courses have an adequateness of flexibility available .
5. 100% of employers agreed that the courses were offered for the courses.
6. 80% of employers agreed that the courses related to job oriented, skill based and value oriented.
7. 100% of employers agreed that the syllabus content to bridge the gap between academia and industry.
8. 87% of employers agreed that the courses are composed in terms of social responsibility, ethics, discipline core, discipline electives, self-study electives, one credit, projects, etc.

Remarks Received:

SEBI & DEMAT can be included in share trading and investment.

Action Taken Summary:

In share trading and investment SEBI & DEMAT topics will be added

ATTESTED

Dr. S. RAMABALAN, M.E., Ph.D.

PRINCIPAL

E.G.S. Pillay Engineering College.

Thethi, Nagore - 611 002.

Nagapattinam (Dt) Tamil Nadu.

**E.G.S. PILLAY ENGINEERING COLLEGE (AUTONOMOUS)**

NAGAPATTINAM – 611 002. TAMILNADU, INDIA

Approved by AICTE, New Delhi, Affiliated to Anna University, Chennai

(Accredited by NAAC with 'A' Grade and NBA)

Email: principal@egspec.org website: www.egspec.org Ph: 04365-251112**Employer Feedback on Curriculum and Syllabus: Analysis and Action Taken Report**

Employer Feedback 2021-22									
Q.No	Parameter	5	4	3	2	1	Total Weightage (15)	Percentage (100)	3 Scale Weightage
1	Rate the structure of the programme	3	0	0	0	0	15	100	3
2	Rate the appropriateness of the sequence of the courses in the curriculum	3	0	0	0	0	15	100	3
3	Rate the depth of the syllabus by the industry/current global scenario	0	3	0	0	0	12	80	2.4
4	Rate the adequateness of flexibility available in the choice of courses to the students	3	0	0	0	0	15	100	3
5	Rate the adequateness of courses offered in providing solutions to the issues relevant to gender, environment, and sustainability	1	2	0	0	0	13	87	2.7
6	Rate the adequateness of courses related to job oriented, skill-based, and value-oriented towards employability	3	0	0	0	0	15	100	3
7	Rate the syllabus content to bridge the gap between academia and industry	3	0	0	0	0	15	100	3
8	Rate the course components (Basic science, basic engineering, humanities, ethics, professional core, professional core, professional elective, open elective, projects etc.)	1	2	0	0	0	13	87	2.7
AVERAGE SCORE							14.13	94.25	2.85

ATTESTED

Dr. S. RAMABALAN, M.E., Ph.D.,
PRINCIPAL
E.G.S. Pillay Engineering College,
Thethi, Nagore - 611 002.
Nagapattinam (Dt) Tamil Nadu.



E.G.S. PILLAY ENGINEERING COLLEGE (AUTONOMOUS)

NAGAPATTINAM – 611 002. TAMILNADU, INDIA

Approved by AICTE, New Delhi, Affiliated to Anna University, Chennai

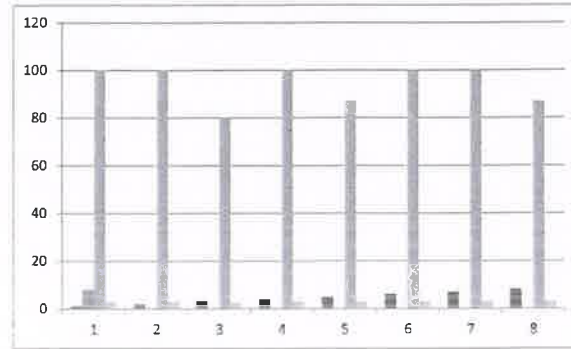
(Accredited by NAAC with 'A' Grade and NBA)

Email: principal@egspsc.org

website: www.egspsc.org

Ph: 04365-251112

Employer Feedback 2021-22



Analysis Interpretation:

1. 100% of employers strongly agreed that the structure of the curriculum framed for the programme is well defined.
2. 100% of employers strongly agreed that the appropriateness of the sequence of the courses provided by the curriculum was good.
3. 80% of employers agreed that the syllabus of the courses is as per the industry/current global scenario.
4. 100% of employers strongly agreed that the courses have an adequateness of flexibility available .
5. 87% of employers agreed that the courses were offered for the courses.
6. 100% of employers agreed that the courses related to job oriented, skill based and value oriented.
7. 100% of employers agreed that the syllabus content to bridge the gap between academia and industry.
8. 87% of employers agreed that the courses are composed in terms of social responsibility, ethics, discipline core, discipline electives, self-study electives, one credit, projects, etc.

Remarks Received:

Leadership, change management may be included in courses, banking , insurance may be included in course.

Action Taken Summary:

Leadership, change management has been included in courses, banking , insurance has been included in course.

ATTESTED

Dr. S. RAMABALAN, M.E., Ph.D.,
PRINCIPAL

E.G.S. Pillay Engineering College,
Thethi, Nagore - 611 002.
Nagapattinam (Dt) Tamil Nadu.



E.G.S. PILLAY ENGINEERING COLLEGE (AUTONOMOUS)

NAGAPATTINAM – 611 002. TAMILNADU, INDIA

Approved by AICTE, New Delhi, Affiliated to Anna University, Chennai

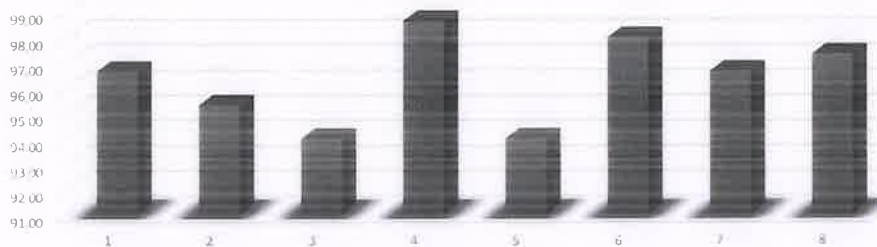
(Accredited by NAAC with 'A' Grade and NBA)

Email: principal@egspeg.org website: www.egspeg.org Ph: 04365-251112

Alumni Feedback on Curriculum and Syllabus: Analysis and Action Taken Report

Alumni Feedback 2017-2018									
Q.No	Parameter	5	4	3	2	1	Total Weightage (150)	Percentage (100)	3 Scale Weightage
1	Rate the adequateness of the courses offered by the programme	25	5	0	0	0	145	96.67	2.9
2	Rate the syllabus content to bridge the gap between academia and industry	23	7	0	0	0	143	95.33	2.86
3	Rate the curriculum concerning your current professional standards	22	7	1	0	0	141	94.00	2.82
4	Rate the skills acquired from the curriculum to face the industry challenges/requirements	28	2	0	0	0	148	98.67	2.96
5	Rate the institute's laboratory and equipment adequateness on practical exposure	21	9	0	0	0	141	94.00	2.82
6	Rate the offering of electives concerning technology advancement	24	6	1	0	0	147	98.00	2.94
7	Rate the design of the courses in terms of extra learning or self-learning	26	3	1	0	0	145	96.67	2.9
8	Rate the composition of the courses in terms of social responsibility, ethics, discipline core, discipline electives, self study electives, one credit, projects, etc.	27	2	1	0	0	146	97.33	2.92
Average Score							144.50	96.33	2.89

Faculty Feedback 2017-2018



Analysis Interpretation:

Majority of the alumnus accepted that the course adequacy is good.

Majority of the alumnus agreed that the syllabus bridge the gap between academia and industry.

Majority of the alumnus accepted that curriculum is professionally standard.

Majority of the alumnus accepted that skills acquired from the curriculum to face the industry challenges/requirements is good.

Majority of the alumnus found that institute's laboratory and equipment adequateness on practical exposure.

Majority of the alumnus accepted that the offering of electives concerning technology advancement.

Majority of the alumnus agreed that the design of the courses in terms of extra learning or self-learning is good.

Majority of the alumnus accepted that the composition of the courses in terms of social responsibility, ethics, discipline core, discipline electives, self-study electives, one credit, projects, etc.

Remarks Received:

Course Outcomes of Operations Management and Organizational Theory Design and Development can be improved.

Action Taken Summary:

Course Outcomes of the suggested courses have been updated.

ATTESTED

Dr. S. RAMABALAN, M.E., Ph.D.,
PRINCIPAL

E.G.S. Pillay Engineering College,
Thethi, Nagore - 611 002.
Nagapattinam (Dt) Tamil Nadu.



E.G.S. PILLAY ENGINEERING COLLEGE (AUTONOMOUS)

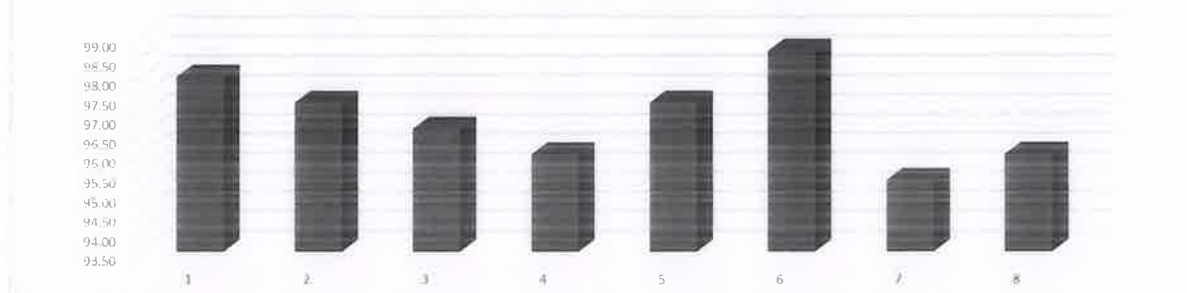
NAGAPATTINAM – 611 002. TAMILNADU, INDIA
Approved by AICTE, New Delhi, Affiliated to Anna University, Chennai
(Accredited by NAAC with 'A' Grade and NBA)

Email: principal@egspeg.org website: www.egspeg.org Ph: 04365-251112

Alumni Feedback on Curriculum and Syllabus: Analysis and Action Taken Report

Alumni Feedback 2018-2019									
Q.No	Parameter	5	4	3	2	1	Total Weightage (150)	Percentage (100)	3 Scale Weightage
1	Rate the adequateness of the courses offered by the programme	27	3	0	0	0	147	98.00	2.94
2	Rate the syllabus content to bridge the gap between academia and industry	26	4	0	0	0	146	97.33	2.92
3	Rate the curriculum concerning your current professional standards	25	5	0	0	0	145	96.67	2.9
4	Rate the skills acquired from the curriculum to face the industry challenges/requirements	24	6	0	0	0	144	96.00	2.88
5	Rate the institute's laboratory and equipment adequateness on practical exposure	26	4	0	0	0	146	97.33	2.92
6	Rate the offering of electives concerning technology advancement	28	2	0	0	0	148	98.67	2.96
7	Rate the design of the courses in terms of extra learning or self-learning	24	5	1	0	0	143	95.33	2.86
8	Rate the composition of the courses in terms of social responsibility, ethics, discipline core, discipline electives, self study electives, one credit, projects, etc.	25	4	1	0	0	144	96.00	2.88
Average Score							145.38	96.92	2.91

Faculty Feedback 2018-2019



Analysis Interpretation:

Majority of the alumnus accepted that the course adequacy is good.

Majority of the alumnus agreed that the syllabus bridge the gap between academia and industry.

Majority of the alumnus accepted that curriculum is professionally standard.

Majority of the alumnus accepted that skills acquired from the curriculum to face the industry challenges/requirements is good.

Majority of the alumnus found that institute's laboratory and equipment adequateness on practical exposure.

Majority of the alumnus accepted that the offering of electives concerning technology advancement.

Majority of the alumnus agreed that the design of the courses in terms of extra learning or self-learning is good.

Majority of the alumnus accepted that the composition of the courses in terms of social responsibility, ethics, discipline core, discipline electives, self-study electives, one credit, projects, etc.

Remarks Received:

More detailed calculations can be taught on learning accounts management and financial management for the non-major students to learn easily.

Action Taken Summary:

Teaching methodology of accounts and financial management is improved with additional problems to work on during the tutorial hours.

ATTESTED

Dr. S. RAMABALAN, M.E., Ph.D.

PRINCIPAL

E.G.S. Pillay Engineering College,
Thethi, Nagore - 611 002.
Nagapattinam (Dt) Tamil Nadu.



E.G.S. PILLAY ENGINEERING COLLEGE (AUTONOMOUS)

NAGAPATTINAM – 611 002. TAMILNADU, INDIA

Approved by AICTE, New Delhi, Affiliated to Anna University, Chennai

(Accredited by NAAC with 'A' Grade and NBA)

Email: principal@egspegc.org

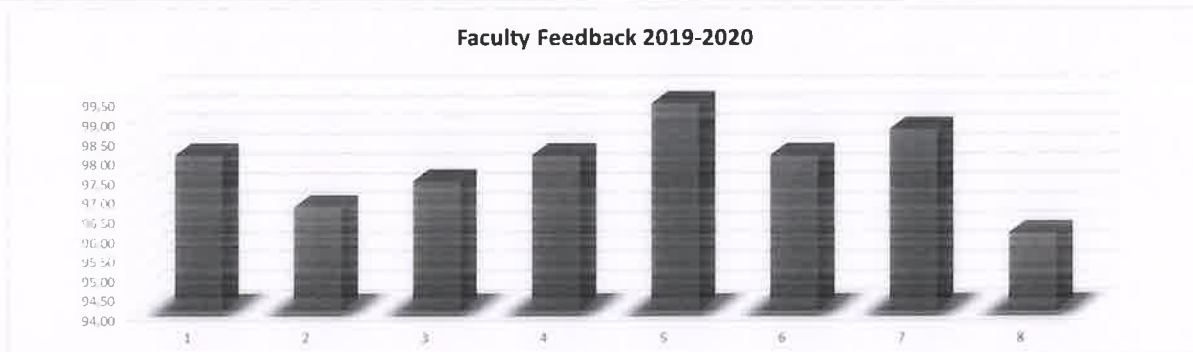
website: www.egspegc.org

Ph: 04365-251112

Alumni Feedback on Curriculum and Syllabus: Analysis and Action Taken Report

Alumni Feedback 2019-2020									
S.No.	Parameter	5	4	3	2	1	Total Weightage (150)	Percentage (100)	3 Scale Weightage
1	Rate the adequateness of the courses offered by the programme	27	3	0	0	0	147	98.00	2.94
2	Rate the syllabus content to bridge the gap between academia and industry	25	5	0	0	0	145	96.67	2.9
3	Rate the curriculum concerning your current professional standards	26	4	0	0	0	146	97.33	2.92
4	Rate the skills acquired from the curriculum to face the industry challenges/requirements	27	3	0	0	0	147	98.00	2.94
5	Rate the institute's laboratory and equipment adequateness on practical exposure	29	1	0	0	0	149	99.33	2.98
6	Rate the offering of electives concerning technology advancement	27	3	0	0	0	147	98.00	2.94
7	Rate the design of the courses in terms of extra learning or self-learning	28	2	0	0	0	148	98.67	2.96
8	Rate the composition of the courses in terms of social responsibility, ethics, discipline core, discipline electives, self study electives, one credit, projects, etc.	24	6	0	0	0	144	96.00	2.88
Average Score							146.63	97.75	2.93

Faculty Feedback 2019-2020



Analysis Interpretation:

Majority of the alumnus accepted that the course adequacy is good.

Majority of the alumnus agreed that the syllabus bridge the gap between academia and industry.

Majority of the alumnus accepted that curriculum is professionally standard.

Majority of the alumnus accepted that skills acquired from the curriculum to face the industry challenges/requirements is good.

Majority of the alumnus found that institute's laboratory and equipment adequateness on practical exposure.

Majority of the alumnus accepted that the offering of electives concerning technology advancement.

Majority of the alumnus agreed that the design of the courses in terms of extra learning or self-learning is good.

Majority of the alumnus accepted that the composition of the courses in terms of social responsibility, ethics, discipline core, discipline electives, self-study electives, one credit, projects, etc.

Remarks Received:

More concentration can be given to improve communication.

Action Taken Summary:

Business communication I & II are improved with more seminars and group discussions.

ATTESTED


Dr. S. RAMABALAN, M.E., Ph.D.,
PRINCIPAL

E.G.S. Pillay Engineering College,
Thethi, Nagore - 611 002.
Nagapattinam (Dt) Tamil Nadu.



E.G.S. PILLAY ENGINEERING COLLEGE (AUTONOMOUS)

NAGAPATTINAM – 611 002. TAMILNADU, INDIA

Approved by AICTE, New Delhi, Affiliated to Anna University, Chennai

(Accredited by NAAC with 'A' Grade and NBA)

Email: principal@egspec.org website: www.egspec.org Ph: 04365-251112

Alumni Feedback on Curriculum and Syllabus: Analysis and Action Taken Report

Alumni Feedback 2020-2021									
S.No.	Parameter	5	4	3	2	1	Total Weightage (150)	Percentage (100)	3 Scale Weightage
1	Rate the adequateness of the courses offered by the programme	29	1	0	0	0	149	99.33	2.98
2	Rate the syllabus content to bridge the gap between academia and industry	28	2	0	0	0	148	98.67	2.96
3	Rate the curriculum concerning your current professional standards	28	1	1	0	0	147	98.00	2.94
4	Rate the skills acquired from the curriculum to face the industry challenges/requirements	29	1	0	0	0	149	99.33	2.98
5	Rate the institute's laboratory and equipment adequateness on practical exposure	27	3	0	0	0	147	98.00	2.94
6	Rate the offering of electives concerning technology advancement	28	2	0	0	0	148	98.67	2.96
7	Rate the design of the courses in terms of extra learning or self-learning	26	4	0	0	0	146	97.33	2.92
8	Rate the composition of the courses in terms of social responsibility, ethics, discipline core, discipline electives, self study electives, one credit, projects, etc.	27	3	0	0	0	147	98.00	2.94
Average Score							147.63	98.42	2.95

Faculty Feedback 2020-2021



Analysis Interpretation:

Analysis Interpretation:

Majority of the alumnus accepted that the course adequacy is good.

Majority of the alumnus agreed that the syllabus bridge the gap between academia and industry.

Majority of the alumnus accepted that curriculum is professionally standard.

Majority of the alumnus accepted that skills acquired from the curriculum to face the industry challenges/requirements is good.

Majority of the alumnus found that institute's laboratory and equipment adequateness on practical exposure.

Majority of the alumnus accepted that the offering of electives concerning technology advancement.

Majority of the alumnus agreed that the design of the courses in terms of extra learning or self-learning is good.

Majority of the alumnus accepted that the composition of the courses in terms of social responsibility, ethics, discipline core, discipline electives, self-study electives, one credit, projects, etc.

Remarks Received:

A detailed Tora class can be included in the curriculum.

Action Taken Summary:

Tora is added to the list of value added courses.

ATTESTED

Dr. S. RAMABALAN, M.E., Ph.D.,
PRINCIPAL

E.G.S. Pillay Engineering College,
Thethi, Nagore - 611 002.
Nagapattinam (Dt) Tamil Nadu.



E.G.S. PILLAY ENGINEERING COLLEGE (AUTONOMOUS)

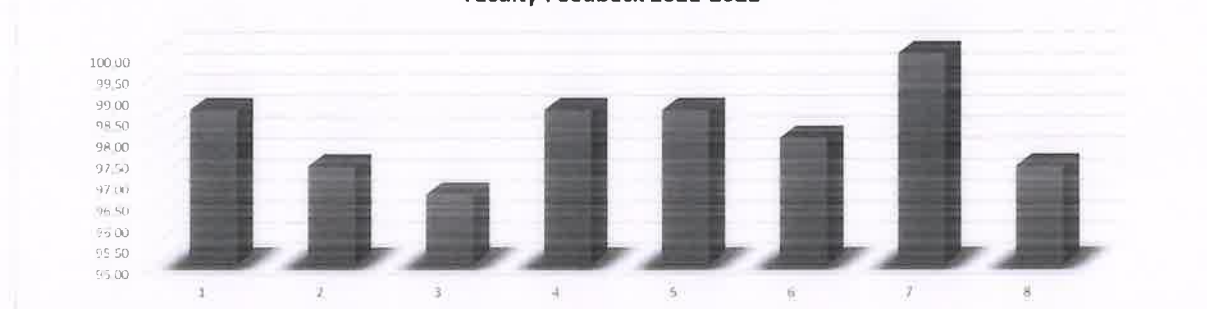
NAGAPATTINAM – 611 002. TAMILNADU, INDIA
Approved by AICTE, New Delhi, Affiliated to Anna University, Chennai
(Accredited by NAAC with 'A' Grade and NBA)

Email: principal@egspec.org website: www.egspec.org Ph: 04365-251112

Alumni Feedback on Curriculum and Syllabus: Analysis and Action Taken Report

Alumni Feedback 2021-2022									
S.No.	Parameter	5	4	3	2	1	Total Weightage (150)	Percentage (100)	3 Scale Weightage
1	Rate the adequateness of the courses offered by the programme	28	2	0	0	0	148	98.67	2.96
2	Rate the syllabus content to bridge the gap between academia and industry	26	4	0	0	0	146	97.33	2.92
3	Rate the curriculum concerning your current professional standards	26	3	1	0	0	145	96.67	2.9
4	Rate the skills acquired from the curriculum to face the industry challenges/requirements	28	2	0	0	0	148	98.67	2.96
5	Rate the institute's laboratory and equipment adequateness on practical exposure	28	2	0	0	0	148	98.67	2.96
6	Rate the offering of electives concerning technology advancement	27	3	0	0	0	147	98.00	2.94
7	Rate the design of the courses in terms of extra learning or self-learning	27	3	1	0	0	150	100.00	3
8	Rate the composition of the courses in terms of social responsibility, ethics, discipline core, discipline electives, self study electives, one credit, projects, etc.	26	4	0	0	0	146	97.33	2.92
Average Score							147.25	98.17	2.95

Faculty Feedback 2021-2022



Analysis Interpretation:

Majority of the alumnus accepted that the course adequacy is good.

Majority of the alumnus agreed that the syllabus bridge the gap between academia and industry.

Majority of the alumnus accepted that curriculum is professionally standard.

Majority of the alumnus accepted that skills acquired from the curriculum to face the industry challenges/requirements is good.

Majority of the alumnus found that institute's laboratory and equipment adequateness on practical exposure.

Majority of the alumnus accepted that the offering of electives concerning technology advancement.

Majority of the alumnus agreed that the design of the courses in terms of extra learning or self-learning is good.

Majority of the alumnus accepted that the composition of the courses in terms of social responsibility, ethics, discipline core, discipline electives, self-study electives, one credit, projects, etc.

Remarks Received:

Finance related courses can be added in the electives to get more concentration on finance as a specialization.

Action Taken Summary:

Financial Derivatives is offered for the final semester as an elective.

ATTESTED

Dr. S. RAMABALAN, M.E., Ph.D.,
PRINCIPAL
E.G.S. Pillay Engineering College,
Thethi, Nagore - 611 002.
Nagapattinam (Dt) Tamil Nadu.



E.G.S. PILLAY ENGINEERING COLLEGE (AUTONOMOUS)

NAGAPATTINAM – 611 002. TAMILNADU, INDIA

Approved by AICTE, New Delhi, Affiliated to Anna University, Chennai

(Accredited by NAAC with 'A' Grade and NBA)

Email: principal@egspec.org

website: www.egspec.org

Ph: 04365-251112

DEPARTMENT OF MANAGEMENT STUDIES

CURRICULUM FEEDBACK RECEIVED FROM THE STAKEHOLDERS

Sl. No	Stakeholder	Stakeholders Name, Designation	Received Feedback	Action Taken	Regulation / Year of Implementation
1	Faculty	Dr. N. Thamarai Kannan, Associate Professor, NIT, Trichy	Regarding the subject Legal Aspects of Business, it is advised to induct Wages Act in revised version.	Wages act is included in Legal Aspects of Business	R2017/2017
2	Faculty	Dr. M. P. Pandikumar, Associate Professor, LIBA, Chennai	Markowitz model should be added in portfolio construction in Security Analysis and Portfolio Management course	Markowitz model is added to the course Security Analysis and Portfolio Management	R2017/2017
3	Alumni	Mr. S. Syed Nasrudeen Moulana, Business Development Associate, Campus Interaction Pvt Ltd, Chennai	3 text books shall be added along with reference books	Text books are added to the list of books	R2017/2017
4	Student	Mounica, 2016-2018 batch	Seminar topics related to Professional Skill Development could be given.	Professional Skill Development topic is added to the list of topics in seminar	R2017/2017
5	Faculty	Mrs. B. Asha Daisy	It may be easy to understand financial statement analysis if real time data is used to explain.	Concentrate in Financial statement Analysis by using real time data is implemented.	R2017/2017
6	Employer	J. Sarath Chandar, Asst Manager-HR, IVTL Infoview Technologies Ltd., Chennai	Industry interaction must be strengthened to get more exposure on projects. Also case study based teaching will be effective in understanding complex topics easier.	Industry interaction in terms of Industrial Visits is implemented. Case based teaching is added to the teaching method.	R2017/2017
7	Student	Prashanthi, 2017-2019 batch	Concentration on communication will give more confidence during placements.	Concentration on Business Communication is increased by motivating students to present seminars on recent trends.	R2017/2018
8	Student	Nalamagarajan, 2018-2020 batch	Group discussion and business plan presentation may be given	Current management events is discussed in group discussion hour	R2017/2019

Dr. S. RAMABALAN, M.E., Ph.D.,
PRINCIPAL

E.G.S. Pillay Engineering College,
Thethi, Nagore - 611 002.
Nagapattinam (Dt) Tamil Nadu



E.G.S. PILLAY ENGINEERING COLLEGE (AUTONOMOUS)

NAGAPATTINAM – 611 002. TAMILNADU, INDIA

Approved by AICTE, New Delhi, Affiliated to Anna University, Chennai

(Accredited by NAAC with 'A' Grade and NBA)

Email: principal@egspec.org

website: www.egspec.org

Ph: 04365-251112

			more importance.	and business plan presentation is added in seminar topics	
9	Student	Giridharan, 2019-2021 batch	Realtime examples can be discussed to understand international business	E content and realtime examples are given for better understanding of concepts.	R2017/2019
10	Faculty	Mr. S. Sathish Kumar	Include International Financial Reporting Standards in the Unit I of Accounting for Decision Making	International Financial Reporting Standards is included in Unit I of Accounting for Decision Making	R2020/2020
11	Faculty	Dr.R.DEEPA, ASSOCIATE PROFESSOR & HEAD, FACULTY OF HUMAN RESOURCES, CHIEF COORDINATOR - PSG CENTER FOR, ACADEMIC RESEARCH AND EXCELLENCE, PSG INSTITUTE OF MANAGEMENT, COIMBATORE	Combining Principles of Management and Organizational Behavior, a new course "Management Concepts and Organizational Behavior" may be introduced	Management Concepts and Organizational behavior is added as a new course	R2020/2020
12	Alumni	Kavya, 2017-2019 batch	More practice problems shall be given for Unit 3testing Of Hypothesis - Parametric Tests and Unit 4 Non-Parametric Tests	Concentration on practice problems on Unit 3testing Of Hypothesis - Parametric Tests and Unit 4 Non-Parametric Tests is implemented in tutorial hours.	R2020/2020
13	Industry	J. Sarath Chandar, Manager-HR, IVTL Infoview Technologies Ltd., Chennai	Include in Information Management, Deep Learning, Big Data, AI, IoT, Crypto Currency, Quantum computing in Unit 5.	Deep Learning, Big Data, AI, IoT, Crypto Currency, Quantum computing in Unit 5 on=f Information Management is included	R2020/2020
14	Faculty	Dr.N.THAMARAI SELVAN, PROFESSOR, DEPARTMENT OF MANAGEMENT STUDIES, NATIONAL INSTITUTE OF TECHNOLOGY, TIRUCHIRAPPALLI	Include the SimQuick or Gold Sim in further readings to gain additional information related to Operations management.	SimQuick in further readings is included in Operations management.	R2020/2020

ATTESTED

Dr. S. RAMABALAN, M.E., Ph.D.,
PRINCIPAL

E.G.S. Pillay Engineering College,
Thethi, Nagore - 611 002.

Nagapattinam (Dt) Tamil Nadu.



E.G.S. PILLAY ENGINEERING COLLEGE (AUTONOMOUS)

NAGAPATTINAM – 611 002. TAMILNADU, INDIA

Approved by AICTE, New Delhi, Affiliated to Anna University, Chennai

(Accredited by NAAC with 'A' Grade and NBA)

Email: principal@egspec.org

website: www.egspec.org

Ph: 04365-251112

15	Student	Diviya	Concentrate more experiments on Advanced MS Excel in this paper rather than MS Word	Course is revised with more experiments on MS Powerpoint	R2020/2020
16	Faculty	Dr. M. P. Pandikumar, Associate Professor, LIBA, Chennai	OTCEI may be included in Unit 1 in Merchant Banking and Financial Services	OTCEI is included in Unit 1 in Merchant Banking and Financial Services	R2020/2020
17	Alumni	R. Kavya	Corporate Skills for Executives, Business Sustainability Management can be added as value added courses	Corporate Skills for Executives, Business Sustainability Management are added as value added courses	R2020/2020
18	Faculty	Mr. S. Sakthi Kamal Nathan	Tora can be added as value added course	Tora is added to the list of value added courses	R2020/2020
19	Student	Renisha	Industrial Visits can be arranged twice in the course duration.	One day industrial visit in 1 st year and 3 day industrial visit in 2 nd year is arranged.	R2020/2021
20	Student	Ahamed Haalidh	Video illustration could be helpful in understanding topics easier.	E content are shared to students and is added to innovative teaching methodology.	R2020/2021

ATTESTED

Dr. S. RAMABALAN, M.E., Ph.D.,
PRINCIPAL

E.G.S. Pillay Engineering College,
Thethi, Nagore - 611 002.
Nagapattinam (Dt) Tamil Nadu.