



E.G.S. PILLAY ENGINEERING COLLEGE (AUTONOMOUS)

NAGAPATTINAM – 611 002. TAMILNADU, INDIA


Approved by AICTE, New Delhi, Affiliated to Anna University, Chennai
(Accredited by NAAC with 'A' Grade and NBA)

Email: principal@egspec.org website: www.egspec.org Ph: 04365-251112


7.1.7 The Institution has a disabled-friendly and barrier-free environment:

JAWS Software facility

JAWS- Job Access With Speech software available in all computer lab in this Institution. The software is the screen reader, developed for computer users whose vision loss prevents them from seeing screen content or navigating with a mouse. The software helps visually impaired people. It is open-source software.



GPS Map Camera



Thethi, Tamil Nadu, India
RR3M+9Q7, Thethi, Tamil Nadu
611001, India
Lat 10.803854°
Long 79.834836°
03/02/23 11:55 AM GMT +05:30

ATTESTED

Dr. S. RAMAPRASAD, M.E., Ph.D.,
Principal

E.G.S. Pillay Engineering College,
Thethi, Nagapattinam - 611 002,
Nagapattinam (Dt) Tamil Nadu.



E.G.S. PILLAY ENGINEERING COLLEGE (AUTONOMOUS)

NAGAPATTINAM – 611 002. TAMILNADU, INDIA

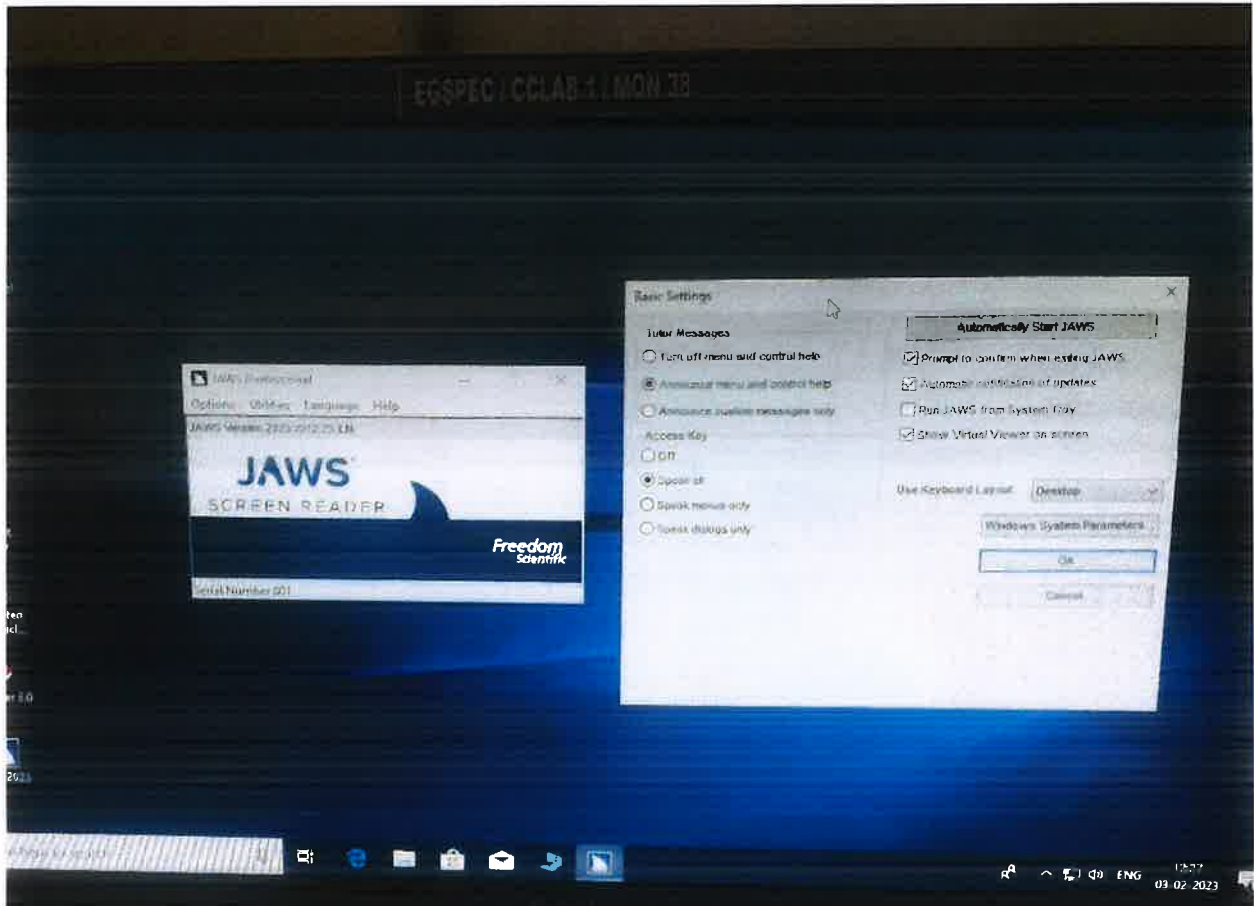
Approved by AICTE, New Delhi, Affiliated to Anna University, Chennai
(Accredited by NAAC with 'A' Grade and NBA)

Email: principal@egspec.org

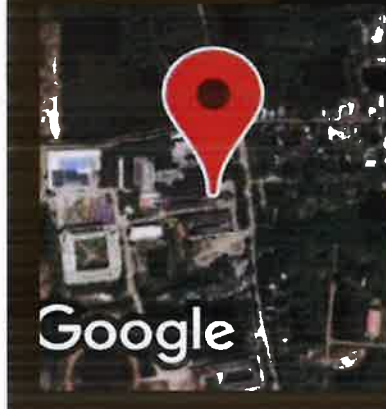
website: www.egspec.org

Ph: 04365-251112

JAWS Setting screen



GPS Map Camera



Thethi, Tamil Nadu, India

RR3M+9Q7, Thethi, Tamil Nadu

611001, India

Lat 10.803728°

Long 79.835096°

03/02/23 11:57 AM GMT +05:30

ATTESTED

Dr. S. RAMABALAN

PRINCIPAL

E.G.S. Pillay Engineer

Thethi, Nagor

Nagapattinam (E



E.G.S. PILLAY ENGINEERING COLLEGE (AUTONOMOUS)

NAGAPATTINAM – 611 002. TAMILNADU, INDIA

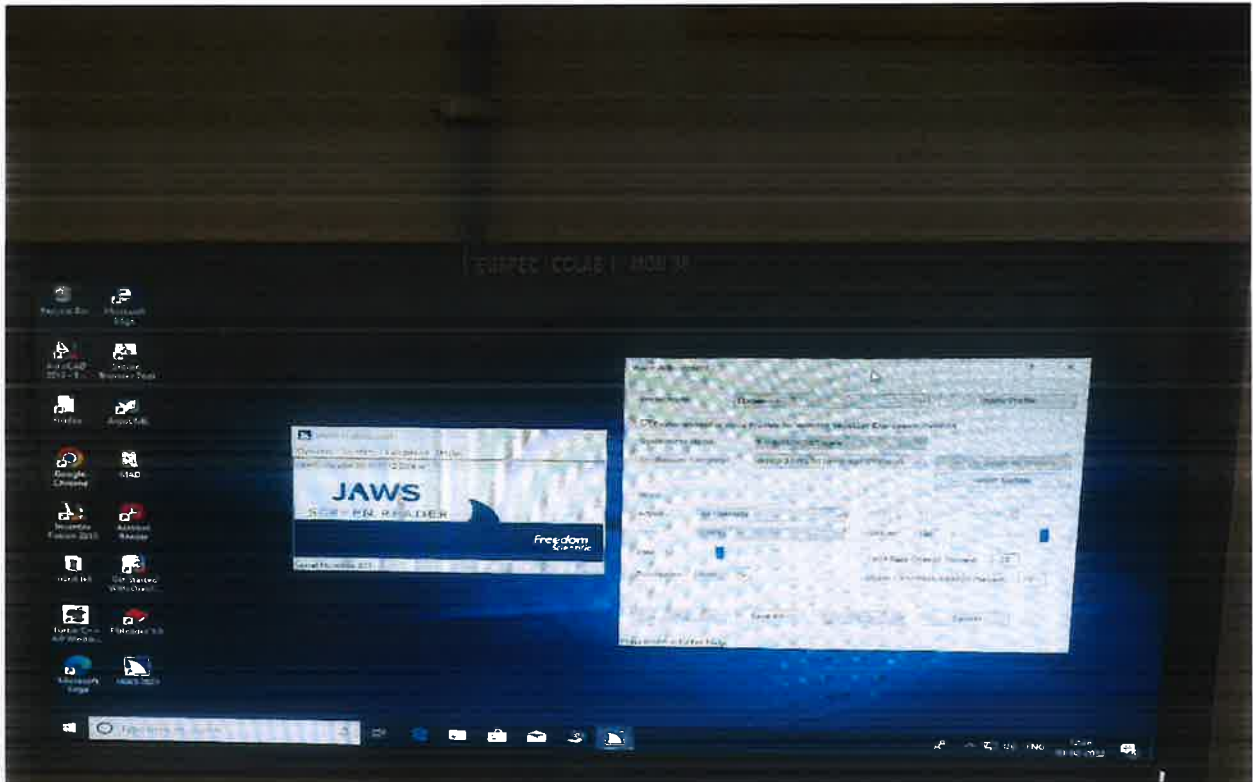
Approved by AICTE, New Delhi, Affiliated to Anna University, Chennai
(Accredited by NAAC with 'A' Grade and NBA)


Email: principal@egspec.org

website: www.egspec.org

Ph: 04365-251112

JAWS Voice adjustment screen



 **GPS Map Camera**



Thethi, Tamil Nadu, India

RR3M+9Q7, Thethi, Tamil Nadu

611001, India

Lat 10.803771°

Long 79.834984°

03/02/23 11:56 AM GMT +05:30

ATTESTED

**Dr. S. RAMABALAN, M.E., Ph.D.,
PRINCIPAL**

E.G.S. Pillay Engineering College,
Thethi, Nagore - 611 002.

Nagapattinam (Dt) Tamil Nadu.